

naylor



Product Code Guide



made in the UK

naylor.co.uk

Engineered for life

Naylor provides a comprehensive range of high quality, high performance drain, duct, sewer and storm systems for use in the highways, power, utilities, commercial, industrial, housing, rail and agriculture sectors to enable essential infrastructure.

An entrepreneurial, modern business, Naylor uses its comprehensive market knowledge to support the delivery of construction and major infrastructure projects all over the country. We have a reputation for being straightforward, supportive and easy-to-deal-with and are committed to making significant, ongoing investment in our business to further develop our product offer, reduce our carbon footprint and ensure we continue to meet the needs of our customers.



naylor

Drain	04
Duct	24
Sewer	52
Storm	56

drain



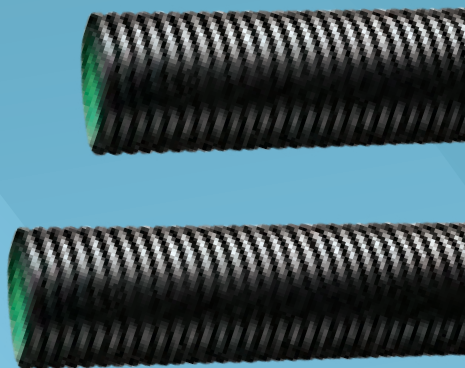
Naylor's range of high performance drain systems comprises MetroDrain, MetroDrain LC, N-Drain and Land Drain.

Our drain systems are suitable for use in wide range of applications including: highways, rail, infrastructure, commercial and industrial projects, car parks, retail areas, golf courses and sports fields and agricultural projects.

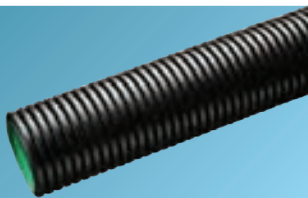
MetroDrain

Perfect for use in environmental water management systems.

- Smooth bore for superior hydraulic flow
- Corrugated outer wall for additional strength
- Available in solid, perforated or half-perforated configurations
- Less brittle, less vulnerable to crack propagation
- Suitable for cold weather applications
- Light weight for easy transportation, handling and installation
- Excellent impact and abrasion resistance
- Resistance to differential ground settlement
- Recognised alternative to concrete and clayware pipes
- Easy-to-cut to required length and minimal jointing
- HAPAS approved by the BBA



MetroDrain



HDPE Premium Twin Wall Carrier/Filter Drainage System.

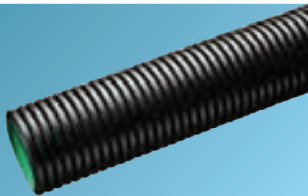
ID (mm)	Nom OD (mm)	Length (m)	Pack Qty	Nom Wt (kg/m)	Code	Cert.
Solid/plain ended						
150	173	6	33	1.4	71302	BBA
225	265	6	14	3.0	71303	BBA
300	353	6	9	5.0	71304	BBA
375	432	6	5	7.4	71305	BBA
450	518	6	4	10.8	71306	BBA
600	692	6	28/Load	18.6	71307	BBA
750	860	6	18/load	26.8	71358	BBA
900	1034	6	8/load	36.0	71359	BBA
1050	1189	6	8/load	51.2	71360	-

Solid/socketed						
750	918‡	3	36/load	26.8	71363	BBA
900	1093‡	3	16/load	36.0	71364	BBA
1050	1255‡	3	16/load	51.2	71331	-
750	918‡	6	18/load	26.8	71311	BBA
900	1093‡	6	8/load	36.0	71321	BBA
1050	1255‡	6	8/load	51.2	71328	-

‡Nominal OD including socket

Perforated/plain ended						
150	173	6	33	1.4	71312	BBA
225	265	6	14	3.0	71313	BBA
300	353	6	9	5.0	71314	BBA
375	432	6	5	7.4	71315	BBA
450	518	6	4	10.8	71316	BBA
600	692	6	28/Load	18.6	71317	BBA
750	860	6	18/load	26.8	71361	BBA
900	1034	6	8/load	36.0	71137	BBA
1050	1189	6	8/load	51.2	71166	-

MetroDrain



HDPE Premium Twin Wall Carrier/Filter Drainage System.

ID (mm)	Nom OD (mm)	Length (m)	Pack Qty	Nom Wt (kg/m)	Code	Cert.
Perforated/socketed						
750	918‡	3	36/load	26.8	71319	BBA
900	1093‡	3	16/load	36.0	71320	BBA
1050	1255‡	3	16/load	51.2	71329	-
750	918‡	6	18/load	26.8	71319	BBA
900	1093‡	6	8/load	36.0	71320	BBA
1050	1255‡	6	8/load	51.2	71329	-

‡Nominal OD including socket

Half Perforated/plain ended						
150	173	6	33	1.4	71322	BBA
225	265	6	14	3.0	73123	BBA
300	353	6	9	5.0	71324	BBA
375	432	6	5	7.4	71375	BBA
450	518	6	4	10.8	71376	BBA
600	692	6	28/Load	18.6	71377	BBA
750	860	6	18/load	26.8	71126	BBA
900	1034	6	8/load	36.0	71155	BBA
1050	1189	6	8/load	51.2	71183	-

Half Perforated/socketed						
750	918‡	3	36/load	26.8	71381	BBA
900	1093‡	3	16/load	36.0	71327	BBA
1050	1255‡	3	16/load	51.2	71327	-
750	918‡	6	18/load	26.8	71311	BBA
900	1093‡	6	8/load	36.0	71321	BBA
1050	1255‡	6	8/load	51.2	71328	-

‡Nominal OD including socket

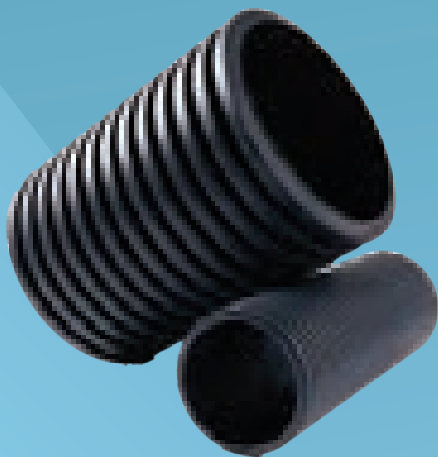
MetroDrain^{LC}

All the performance, half the carbon*

*Average 48% reduction in kgCO₂e

MetroDrain LC is our newest product in Naylor's drainage range. With all the benefits of the original MetroDrain system, but manufactured with 48% less carbon, the new system has been designed to give customers a more environmentally friendly solution, without losing any of the performance.

MetroDrain LC is also just as easy to install, handle and transport, and has been through the same stringent testing and certification process.



MetroDrain^{LC}

HDPE Low carbon Twin Wall
Carrier Drainage System

Average 48% reduction in kgCO₂e



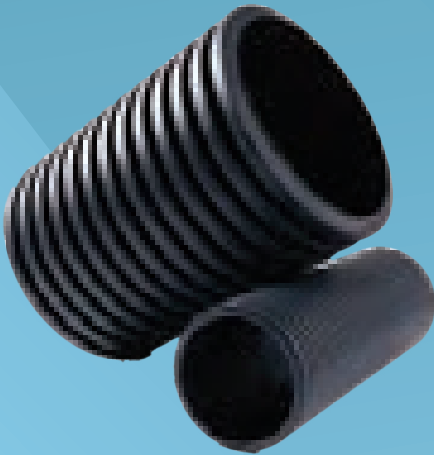
ID (mm)	Nom OD(mm)	Length (m)	Pack Qty	Nom Wt (kg/m)	Code
Solid/plain ended					
150	173	6	33	1.6	74202
225	265	6	14	3.3	74203
300	353	6	9	5.0	74204
375	432	6	5	7.4	74205
450	518	6	4	10.8	74206
600	692	6	28/Load	21.0	74207

Performance Testing	Metrodrain	Metrodrain ^{LC}
Material properties & specification	✓	✓
Dimensions	✓	✓
Ring stiffness	✓	✓
Creep ratio	✓	✓
Resistance to longitudinal bending	✓	✓
Impact strength	✓	✓
Rodding resistance	✓	✓
Water jetting	✓	✓
Leaktightness including subject to diameter distortion and angular deflection	✓	✓

N-Drain

A lighter-duty drainage system for non-BBA applications including agriculture.

- Lighter duty drainage system
- Wide range of fittings
- Wide range of pipe sizes
- Can be cut to length without the need for special tools
- Competitively priced for agricultural and private use
- Fabricated fittings available upon request



N-Drain Pipes

HDPE Agricultural Twin Wall
Carrier/Filter Drainage System



ID (mm)	Nom OD(mm)	Length (m)	Pack Qty	Nom Wt (kg/m)	Code
Unperforated/plain ended					
100	117	6	85	0.63	71107
150	173	6	33	1.18	71260
225	267	6	14	2.52	71076
300	354	6	9	3.9	71075
375	433	6	5	5.59	71117
450	521	6	4	9.1	71118
600	695	6	28/Load	17.05	71093

Solid/plain ended

100	117	6	85	0.63	71108
150	173	6	33	1.18	71259
225	267	6	14	2.52	71080
300	354	6	9	3.9	71079
375	433	6	5	5.59	71119
450	521	6	4	9.1	71120
600	695	6	28/Load	17.05	71121

*Half Perforated subject to minimum quantities and lead time.

Accessories

The following accessories fit our MetroDrain, MertoDrain LC and N-Drain products.

- T Junctions
- Y Junctions
- Bends
- Level Invert Reducers
- Couplings
- Sealing Rings
- Ribbed Road Gullies
- Yard Gully
- Gully Connection Pipe
- Outlet Adapter
- End Caps
- Lubricant



T Junctions



ID (mm)	Code	Cert.	ID (mm)	Code	Cert.
90° Junctions/socketed			90° Junctions/plain ended		
100 x 100	71406	-	750 x 150	71834	-
150 x 100	71604	BBA	750 x 225	71836	-
150 x 150	71585	BBA	750 x 300	71838	-
225 x 150	71587	BBA	750 x 375	71840	-
225 x 225	71588	BBA	750 x 450	71842	-
300 x 150	71624	BBA	750 x 600	71844	-
300 x 225	71626	BBA	750 x 750	71846	-
300 x 300	71628	BBA	900 x 150	71854	-
375 x 150	71634	BBA	900 x 225	71856	-
375 x 225	71636	BBA	900 x 300	71858	-
375 x 300	71638	BBA	900 x 375	71860	-
375 x 375	71640	BBA	900 x 450	71862	-
450 x 150	71644	BBA	900 x 600	71864	-
450 x 225	71646	BBA	900 x 750	71866	-
450 x 300	71648	BBA	900 x 900	71868	-
450 x 375	71650	BBA	1050 x 150	71884	-
450 x 450	71652	BBA	1050 x 225	71886	-
600 x 150	71664	BBA	1050 x 300	71888	-
600 x 225	71666	BBA	1050 x 375	71890	-
600 x 300	71668	BBA	1050 x 450	71892	-
600 x 375	71670	BBA	1050 x 600	71894	-
600 x 450	71672	BBA	1050 x 750	71896	-
600 x 600	71674	BBA	1050 x 900	71898	-
			1050 x 1050	71900	-

Requires sealing rings on all sealed systems/couplers.

Y Junctions



ID (mm)	Code	Cert.	ID (mm)	Code	Cert.
45° Junctions/socketed			45° Junctions/plain ended		
100 x 100	-	BBA	750 x 150	71833	-
150 x 100	71698	BBA	750 x 225	71835	-
150 x 150	71581	BBA	750 x 300	71837	-
225 x 150	71586	BBA	750 x 375	71839	-
225 x 225	71584	BBA	750 x 450	71841	-
300 x 150	71623	BBA	750 x 600	71843	-
300 x 225	71625	BBA	750 x 750	71845	-
300 x 300	71627	BBA	900 x 150	71853	-
375 x 150*	71633	BBA	900 x 225	71855	-
375 x 225*	71635	BBA	900 x 300	71857	-
375 x 300*	71637	BBA	900 x 375	71859	-
375 x 375*	71639	BBA	900 x 450	71861	-
450 x 150*	71643	BBA	900 x 600	71863	-
450 x 225*	71645	BBA	900 x 750	71865	-
450 x 300*	71647	BBA	900 x 900	71867	-
450 x 375*	71649	BBA	1050 x 150	71883	-
450 x 450*	71651	BBA	1050 x 225	71885	-
600 x 150*	71663	BBA	1050 x 300	71887	-
600 x 225*	71665	BBA	1050 x 375	71889	-
600 x 300*	71667	BBA	1050 x 450	71891	-
600 x 375*	71669	BBA	1050 x 600	71893	-
600 x 450*	71671	BBA	1050 x 750	71895	-
600 x 600*	71673	BBA	1050 x 900	71897	-
			1050 x 1050	71899	-

Requires sealing rings on all sealed systems/couplers.

Bends



ID (mm)	Bend	Code	Cert.
100	11¼	71401	-
100	22½	71402	BBA
100	45	71403	BBA
100	90	71404	BBA
150	11¼	71351	BBA
150	22½	71352	BBA
150	45	71353	BBA
150	90	71354	BBA
225	11¼	71563	BBA
225	22½	71573	BBA
225	45	71583	BBA
225	90	71593	BBA
300	11¼	71504	BBA
300	22½	71514	BBA
300	45	71524	BBA
300	90	71534	BBA
375	11¼	71505	BBA
375	22½	71515	BBA
375	45	71525	BBA
375	90	71535	BBA
450	11¼	71506	BBA

ID (mm)	Bend	Code	Cert.
450	22½	71516	BBA
450	45	71526	BBA
450	90	71536	BBA
600	11¼	71507	BBA
600	22½	71517	BBA
600	45	71527	BBA
600	90	71537	BBA
†750	11¼	71508	-
†750	22½	71518	-
†750	45	71528	-
†750	90	71538	-
†900	11¼	71509	-
†900	22½	71519	-
†900	45	71529	-
†900	90	71539	-
†1050	11¼	71510	-
†1050	22½	71520	-
†1050	45	71530	-
†1050	90	71540	-

† Plain ended.

Level Invert Reducers



ID (mm)	Code
Socketed	
150 x 100	71701
225 x 150	71703
300 x 150	71705
300 x 225	71706
375 x 150	71708
375 x 225	71709
375 x 300	71710
450 x 150	71712
450 x 225	71713
450 x 300	71714
450 x 375	71715
600 x 150	71717
600 x 225	71718
600 x 300	71719
600 x 375	71720
600 x 450	71721
750 x 150	71742
750 x 225	71743
750 x 300	71744

ID (mm)	Code
Socketed	
750 x 375	71745
750 x 450	71746
750 x 600	71747
900 x 150	71752
900 x 225	71753
900 x 300	71754
900 x 375	71755
900 x 450	71756
900 x 600	71757
900 x 750	71758
1050 x 150	71772
1050 x 225	71773
1050 x 300	71774
1050 x 375	71775
1050 x 450	71776
1050 x 600	71777
1050 x 750	71778
1050 x 900	71779

Outlet Adaptor



OD (mm)	Code
160/178*	67012

Adaptor Coupling

178/172	71700
---------	-------

160mm Outlet Connects to	150mm ID	178mm OD	Twinwall
	150mm ID	178mm OD	Ultra-Rib
	150mm ID	178mm OD	Clayware
	150mm ID	160mm OD	Quantum
	-	160mm OD	PVC-u
	-	160mm OD	Land Drain
	-	160mm OD	Gully Connection Pipe
-	178mm OD	Gully Connection Pipe	

178mm Outlet Connects to	150mm ID	160mm OD	Quantum
	-	160mm OD	PVC-u
	-	160mm OD	Land Drain
	-	160mm OD	Gully Connection Pipe

Ribbed Road Gullies



All Plastic HDPE Gullies are supplied complete with internal trap and rodding eye. Supplied into stock in pack quantities only. 100% recycled.

Pack Qty.	DN Internal (Nominal)	Internal Depth (Nominal)	DN Outlet (Nominal)	Code
20	450	900	178	67003
20	450	900	160	67004
20	450	750	160	67005
20	450	750	178	67009
20	375	750	178	67002

Yard Gully



Supplied into stock in pack quantities only. 100% recycled.

Pack Qty	Diameter (mm)	Hight	DN	Code
30	300	600	110	67006

Gully Connection Pipe



Diameter (mm)	Length (m)	Pallet Qty	Code
160	25	5	67011
178	25	5	67008

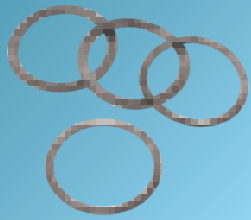
Couplings



ID (mm)	Dimension A (mm)	Code	Cert.
100*	-	29101	-
150	176	71332	BBA
225	284	71333	BBA
300	353	71334	BBA
375	330	71335	BBA
450	396	71336	BBA
600	485	71337	BBA
750	700	71045	BBA
900	800	71047	BBA
1050	900	71050	-

One coupling and two seals are required per joint if coupling used.

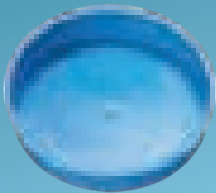
Sealing Rings



ID (mm)	Material	Pack Qty	Code	Cert.
100	EPDM	1	29115	-
150	EPDM	1	71342	BBA
225	EPDM	1	71343	BBA
300	EPDM	1	71344	BBA
375	EPDM	1	71345	BBA
450	EPDM	1	71346	BBA
600	EPDM	1	71347	BBA
750	EPDM	1	71099	BBA
900	EPDM	1	71102	BBA
1050	EPDM	1	71104	-

Two seals are required per joint

End Caps



Size (mm)	Code
150	71802
225	71803
300	71804
375	71805
450	71806
600	71807

Lubricant



Size (Kg)	Code
1.0	50001
2.5	50002

Suitable for all types of push fit gravity pipe systems. We cannot guarantee the performance of the product if Naylor Lubricant is not used.

Land Drain

Quick and easy to install
with excellent water flow.

- Strong (manufactured from HDPE)
- Produced from 100% recycled materials
- Available in KiteMarked (BS4926) and non-KiteMarked solutions
- Available in sizes 60mm to 160mm diameter
- Available in coils upto 150m in length
- Available with geotextile wrap
- Suitable for agricultural, sports field and domestic applications



Land Drain



External Dia (mm)	Length (m)	Pack Qty	Code
Solid – Black			
60	25	12	68029
60	50	8	68032
60	150	5	68033
80	25	9	68034
80	50	7	68035
80	100	4	68036
100	25	7	68037
100	50	6	68038
100	100	4	68039
160	50	4	68007
160†	35	-	68094

Manufactured in accordance with BS4962.

†Scotland only.

60	50	8	68042
60	150	5	68043
80	25	9	68048
80	50	7	68053
80	100	4	68049
100	25	7	68050
100	50	6	68044
100	100	4	68045
160	50	4	68009
160†	35	-	68046

Manufactured in accordance with BS4962.

†Scotland only.

Kitemarked Land Drain



External Dia (mm)	Length (m)	Pack Qty	Code	Cert.
-------------------	------------	----------	------	-------

Perforated – Black

60*	50	8	68202	BS
60*	150	5	68204	BS
80*	25	9	68301	BS
80*	50	7	68302	BS
80*	100	4	68303	BS
100*	25	7	68401	BS
100*	50	6	68402	BS
100*	100	4	68403	BS
160*	50	4	68502	BS

Kitemarked to BS4962

Solid – Black

60*	150	5	68214	BS
80*	100	4	68313	BS
100*	100	4	68413	BS
160*	50	4	68512	BS

*Marked Naylor BS4962

Wrapped Land Drainage

Geotextile wrapped land drainage coil prevents ingress of very fine particles, such as sand and sediment.



External Dia (mm)	Length (m)	Pack Qty	Code
-------------------	------------	----------	------

Perforated – Black

80	50	5	68077
100	50	5	68118
160	50	3	68119

Land Drain Universal Fittings



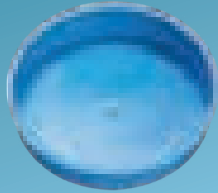
Description	Pack Qty	Code
60/80/100 Multi Junction	50	68064
60/160 Multi Junction	10	68061

Land Drain Connectors



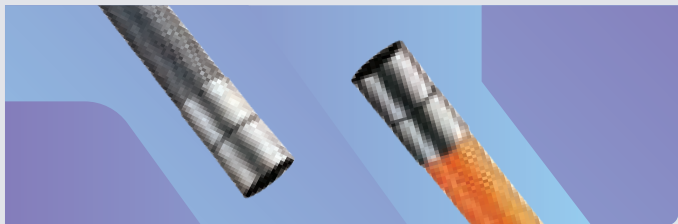
External Dia. (mm)	Code
60	68086
80	68087
100	68062
160	68063

End Caps



External Dia (mm)	Code
60	68090
80	68088
100	68091
160	68109

duct



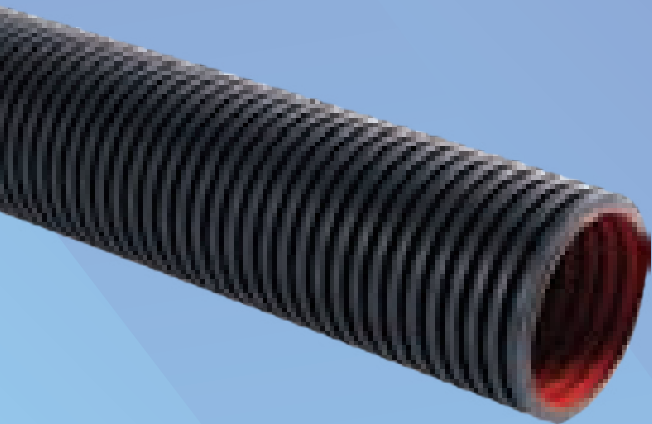
Naylor offer a technically advanced and comprehensive range of ducting systems. With production facilities in both England and Scotland we are well placed to meet the needs of civils, utility, telecommunication markets and others.

The Naylor ducting system comprises three main components: ducting pipes, access chambers, covers and frames.

Naylor 50-150mm ducting is manufactured to BBA and BS EN61386 as required by the Highways Agency.

MetroDuct

Class 1 & 2 PP
Twin Wall Duct



Class 1 Polypropylene Twin Wall



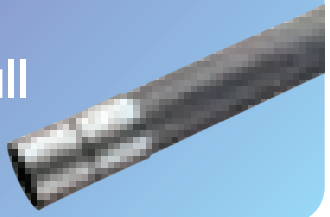
ID (mm)	OD (mm)	Weight (kg/m)	Cert.	Pack Qty	Code
100mm	120mm	1.2	ENATS 12/24	85	29526
125mm	145mm	1.395	ENATS 12/24	72	29626

Class 1 Twin Wall bend



ID (mm)	OD (mm)	Angle	Length (m)	Code
100mm	120mm	11.25	1.2m	29800
100mm	120mm	11.25	3.9m	29802
100mm	120mm	22.5	1.2m	29803
100mm	120mm	22.5	3.9m	29805
100mm	120mm	45	1.2m	29807
125mm	145mm	11.25	3.9m	29812
125mm	145mm	22.5	3.9m	29815
125mm	145mm	45	1.2m	29817
150mm	178mm	11.25	1.2m	29820
150mm	178mm	11.25	3.9m	29822
150mm	178mm	22.5	1.2m	29823
150mm	178mm	22.5	3.9m	29825
150mm	178mm	45	1.2m	29827

Class 2 HDPE Twin Wall



ID (mm)	OD (mm)	Cert.	Length (m)	Pack Qty	Code
100mm	120mm	ENATS 12/24	6m	85	29516
100mm	120mm	ENATS 12/24	3m	72	29513
125mm	145mm	ENATS 12/24	6m	72	29616
150mm	178mm	ENATS 12/24	6m	33	29716
150mm	178mm	ENATS 12/24	3m	33	29713

MetroDuct

Class 3
HDPE Utility Duct



Class 3 HDPE Twin Wall

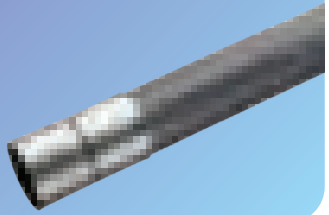
Electric Black



ID/OD (mm)	Length (m)	Pack Qty	Code	Cert.
Printed - Electric Cable Duct				
94/110	6	100	29120	BBA
100/120	6	85	29278	BBA
125/145	6	72	29111	BBA
137/160	6	33	29119	BBA
150/178	6	33	29112	BBA

Class 3 HDPE Twin Wall

Unmarked Black



ID/OD (mm)	Length (m)	Pack Qty	Code	Cert.
94/110*	6	100	29450	BBA
100/120*	6	85	29451	BBA
125/145*	6	72	29452	BBA
137/160*	6	33	29453	BBA
150/178*	6	33	29454	BBA

*Subject to minimum order quantity and lead time.

Class 3 HDPE Twin Wall Sealed System



Electric Black Plane Ended

ID/OD (mm)	Length (m)	Pack Qty	Code
94/110+	6	100	29007
100/120+	6	85	29388
150/178+	6	33	29370

For sealed system 2 sealing rings required per 6m length.

*Subject to minimum order quantity and lead time.

Twin Wall Split Duct

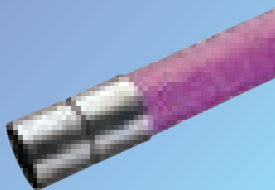


C/W Dowels or ties as appropriate

ID/OD (mm)	Length (m)	Pack Qty	Code
94/110	1	100	29285
100/120	1	85	29080
125/145	1	72	29210
150/178	1	33	29121
94/110	3	100	29070
100/120	3	85	29081
125/145	3	72	29242
150/178	3	33	29223

Made to order, subject to a lead time.

Class 3 HDPE Twin Wall Sealed System



Motorway Communication

ID/OD (mm)	Length (m)	Pack Qty	Code	Cert.
94/110	6	100	29046	BBA
100/120	6	85	29364	BBA
150/178	6	33	29420	BBA

For sealed system 2 sealing rings required per 6m length.

*Subject to minimum order quantity and lead time.

Class 3 HDPE Twin Wall Coiled

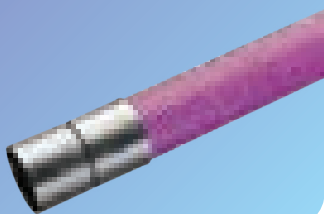


Electric Black

ID/OD (mm)	Length (m)	Colours	Pack Qty	Code	Cert.
Printed Electric Cable Duct					
50/63	50	Black	8	29113	BS
94/110	50	Black	5	29267	BS
137/160	25	Black	7	29268	BS
137/160	50	Black	4	29092	BS

Coils supplied with pre-installed draw string and coupling.

Class 3 HDPE Twin Wall



Motorway Communication

ID/OD (mm)	Length (m)	Pack Qty	Code	Cert
94/110	6	100	29043	BBA
100/120	6	85	29200	BBA
137/160	6	33	29249	BBA
150/178	6	33	29059	BBA

Supplied with one coupling per length.

Class 3 HDPE Twin Wall Coiled



Motorway Communication

ID/OD (mm)	Length (m)	Pack Qty	Code	Cert
50/63	50	8	29279	BS
94/110	50	5	29280	BS
137/160*	50	4	29019	BS

Class 3 HDPE Twin Wall



Street Lighting/Traffic Signal

ID/OD (mm)	Length (m)	Marked	Pack Qty	Code	Cert
50/63*	6	SL	158	29087	BBA
50/63*	6	TS	158	29086	BBA
94/110	6	SL	100	29085	BBA
94/110	6	TS	100	29084	BBA
94/110	6	Plain	100	29042	BBA
100/120*	6	SL	85	29083	BBA
100/120*	6	TS	85	29082	BBA
100/120*	6	Plain	85	29052	BBA
137/160*	6	SL	33	29198	BBA
137/160*	6	TS	33	29189	BBA
137/160*	6	Plain	33	29197	BBA
150/178	6	SL	33	29061	BBA
150/178	6	TS	33	29356	BBA
150/178*	6	Plain	33	29357	BBA

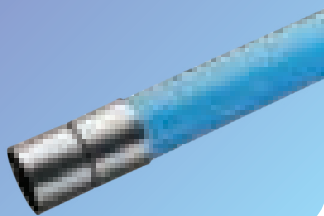
Class 3 HDPE Twin Wall Coiled



Street Lighting/Traffic Signal

ID/OD (mm)	Length (m)	Marked	Pack Qty	Code	Cert.
50/63	50	SL	8	29091	BS
50/63	50	TS	8	29090	BS
50/63	50	Plain	8	29037	-
94/110	50	SL	5	29089	BS
94/110	50	TS	5	29088	BS
94/110	50	Plain	5	29047	-
137/160*	50	SL	4	29135	BS
137/160*	50	TS	4	29348	BS
137/160*	50	Plain	4	29124	-

Class 3 HDPE Twin Wall



Utility – Water

ID/OD (mm)	Length (m)	Pack Qty	Code	Cert.
Blue				
94/110	6	100	29110	BBA
100/120*	6	85	29350	BBA
137/160	6	33	29241	BBA
150/178	6	33	29355	BBA
225/266+	6	14	29413	-
300/353+	6	9	29414	-
450/518	6	4	29434	-
Blue Perforated				
150/178	6	33	29432	-
225/266	6	14	29428	-
300/353	6	9	29433	-
450/518	6	4	29435	-

Class 3 HDPE Twin Wall Coiled



Utility – Water

ID/OD (mm)	Length (m)	Pack Qty	Code	Cert.
50/63	50	8	29039	BS
94/110	50	5	29049	BS

Class 3 HDPE Twin Wall



Utility – Gas

ID/OD (mm)	Length (m)	Pack Qty	Code	Cert.
Yellow				
94/110	6	100	29045	BBA
100/120*	6	85	29349	BBA
137/160	6	33	29244	BBA
150/178	6	33	29358	BBA
225/266+	6	14	29411	-
300/353+	6	9	29412	-
450/518	6	4	29437	-
Yellow Perforated				
150/178	6	33	29431	-
225/266	6	14	29424	-
300/353	6	9	29427	-
450/518	6	4	29436	-

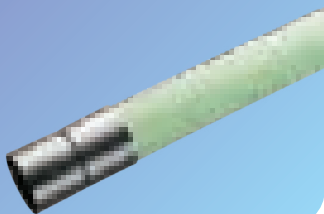
Class 3 HDPE Twin Wall Coiled



Utility – Gas

ID/OD (mm)	Length (m)	Pack Qty	Code	Cert.
50/63	50	8	29040	BS
94/110	50	5	29050	BS

Class 3 HDPE Twin Wall



Utility – CCTV

ID/OD (mm)	Length (m)	Pack Qty	Code	Certification
Green				
94/110	6	100	29281	BBA
100/120*	6	85	29351	BBA
137/160*	6	33	29250	BBA
150/178	6	33	29359	BBA

Class 3 HDPE Twin Wall Coiled



Utility – CCTV

ID/OD (mm)	Length (m)	Pack Qty	Code	Cert.
50/63	50	8	29094	BS
94/110	50	5	29171	BS

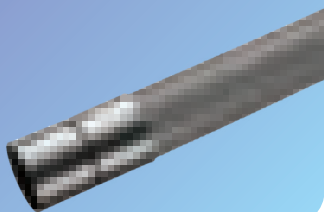
Note:

Coils supplied with pre-installed twine and coupling. Other colours available subject to a minimum order quantity and lead time.

* Subject to minimum order quantity and lead time.

+ Please Note: Pipe supplied plain ended – order couplings separately .

Class 3 HDPE Twin Wall



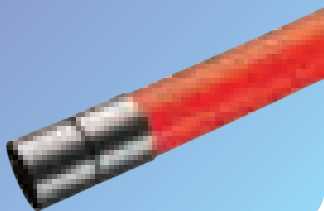
Utility – Telecommunications

ID/OD (mm)	Length (m)	Pack Qty	Code	Cert.
------------	------------	----------	------	-------

Grey

94/110*	6	100	29238	BBA
150/178*	6	33	29396	BBA

Class 3 HDPE Twin Wall



Utility – Electricity/Power

ID/OD (mm)	Length (m)	Pack Qty	Code	Cert.
------------	------------	----------	------	-------

Red

94/110	6	100	29170	BBA
--------	---	-----	-------	-----

* Subject to minimum order quantity and lead time.

HDPE Twin Wall Bends



ID/OD (mm)	11 ¼° Code	22 ½° code	45° Code	90° Code
------------	------------	------------	----------	----------

Supplied plain ended.

94/110	29144	29141	29138	29149
100/120	29215	29174	29164	29159
125/145	29243	29165	29166	29156
137/160	29022	29180	29181	29182
150/178	29262	29183	29163	29162

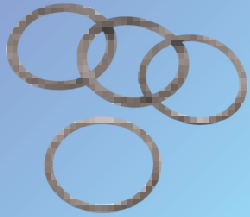
Order couplings separately.

Couplings



ID (mm)	Code	Weight	Bag Qty
63	29104	0.04kg	1
90	29103	0.10kg	1
110	29225	0.17kg	1
120	29101	0.18kg	1
145	29100	0.27kg	1
160	29099	0.23kg	1
178	29098	0.26kg	1
266	29415	-	1
353	29416	-	1

Sealing Rings



Diameter (mm)	Code
110	29107
120	29115
160	29106
178	29117

For sealed system 2 sealing rings required per 6m length.

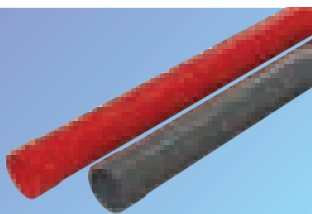


PVC Duct

Class 1 & 2
uPVC Duct



Class 1 uPVC

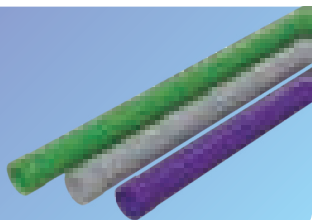


Fully compliant with ENATS 12/24
Certificate No. A3002

OD (mm)	Length (m)	Pack Qty	Black Code (RAL 7021)	Red Code (RAL 3020)
88.9	3	138	30131	30130
88.9	6	138	30133	30132
110	3	90	30111	30110
110	6	90	30112	30113
160	3	39	30161	30160
160	6	39	30163	30162

Supplied with blown socket

Class 2 uPVC

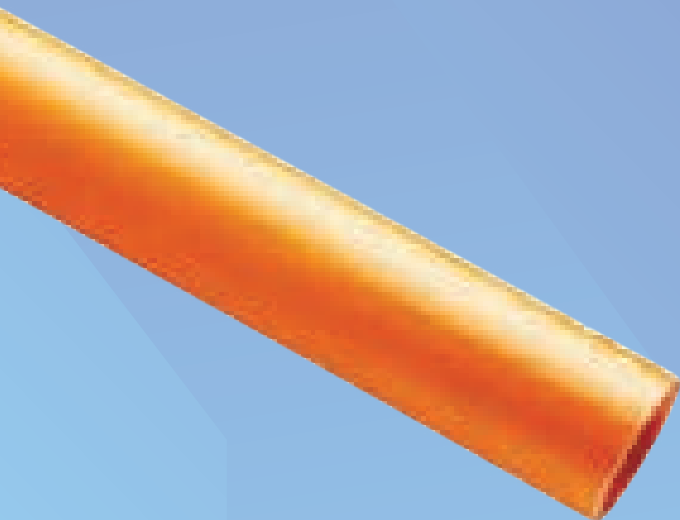


Fully compliant with ENATS 12/24
Certificate No. T5952

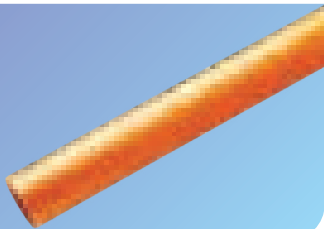
OD (mm)	Length (m)	Pack Qty	Black Code (RAL 7021)	Red Code (RAL 3020)
38	3	780	30071	30070
96.5	6	115	30098	30099
96.5	3	115	30091	30090
110	6	90	30083	30081
110	3	90	30082	30080
160	6	39	30266	30265
160	3	39	30261	30260

Supplied with blown socket

Smooth Duct



Smooth Duct

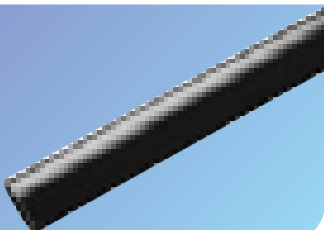


ID/OD (mm)	Length (m)	Weight (kg/m)	Pack Qty	Code
53/63*	6	5	288	38028
97/107	6	5	76	38091
53/63*	6	5	288	38059
97/107	6	5	76	38030

Supplied with a coupler. Extra couplings to be ordered separately.

*Subject to minimum order quantity and lead time.

Smooth Duct – Electric Cable

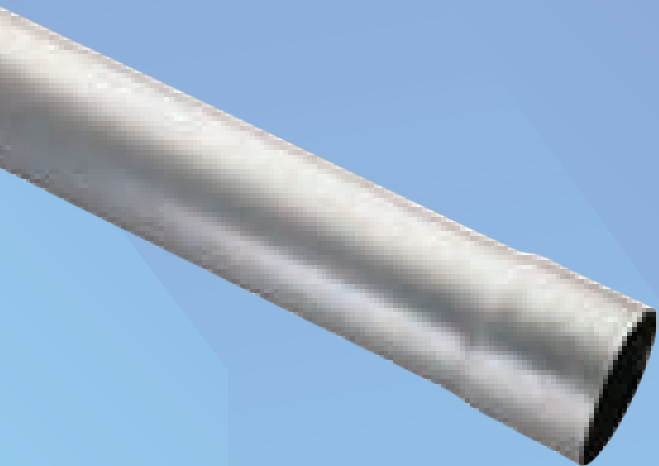


ID/OD (mm)	Length (m)	Weight (kg/m)	Pack Qty	Code
32/37	25	2.5	15	38020
32/37	50	2.5	8	38023
32/37	100	2.5	5	38024
38/44	25	3	15	38021
38/44	50	3	8	38025
38/44	100	3	5	38026
50/60	25	5	12	38033
50/60	50	5	8	38034

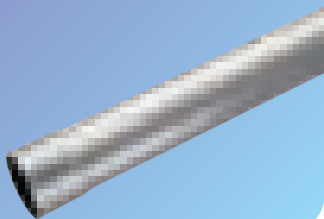
PE Smooth internal and external. Colour Black.

Coils supplied plain ended and couplers can be made to special order and a minimum order quantity applies.

General Purpose Duct



General Purpose Duct



OD (mm)	Length (m)	Pack Qty	Code
54	6	369	30052
88.9	6	125	30053
114	6	76	30054
168	6	39	30055
200	6	25	30056

General Purpose Duct Connectors



Diameter (in)	Pack Qty	Code
2	100	36050
3	50	36049
4	50	36048
6	25	36047
8	1	36046

Supplied into stock in bag quantities only.

General Purpose Duct Bends



OD(mm)	Pack Qty	11 ½° Code	22 ½° code	45° Code	90° Code
54	50	36054	36058	36071	36073
88.9	15	36053	36057	36078	36074
114	10	36052	36056	36079	36075
168	2	36051	36055	36080	36076
200	1	-	-	36081	36077

HDPE Single Wall Ducting



HDPE Single Wall Ducting



OD (mm)	Length (m)	Colour	Code	Cert.
Street Lighting Scotland - Purple				
35	25	Purple	M68027	BS
63	100	Purple	M68006	BS
105	40	Purple	M68001	BS

HDPE Single Wall Ducting



Yellow Perforated Gas pipe -
Kitemarked to BS4962

OD (mm)	Length (m)	Pack Qty	Code	Cert.
Yellow Perforated				
60	50	8	68075	BS
60	150	5	68074	BS
80	25	9	68073	BS
80	50	7	68072	BS
80	100	4	68071	BS
100	25	7	68070	BS
100	50	6	68069	BS
100	100	4	68068	BS
160	50	4	68066	BS

Duct Accessories

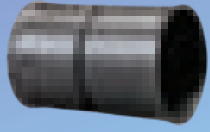


Reducers – Scotland



OD (mm)	Colour	Code
105x63	Black	68008

Connectors – Scotland



OD (mm)	Colour	Code
63	Black	M29343
105	Black	M29345

Junction Box – Scotland



OD (mm)	Colour	Code
Junctions Boxes Scotland		
105	Black	M68132

Access Chamber



Clear opening Width (mm)	Clear opening Length (mm)	Depth (mm)	Pallet Qty	Code
300	300	330	18	69224
300	450	330	18	69225
450	450	330	24	69226
450	600	330	18	69227
600	600	330	13	69228

Supplied fully assembled or flat packed.

Covers & Frames



Dimensions (mm)	Code
300x300	69128
300x450	69129
450x450	69127
450x600	69126
600x600	69125

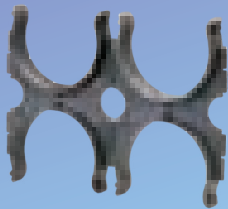
Draw Cord



Size (Kg)	Code
220 Metre Coil	29264
500 Metre Drum	29191

Nominal 5kN Breaking Strength. 6mm cord.

Duct Spacer



Description	Size	Code
4 Way	110	29230
4 Way	120	29375
4 Way	150 (178)	29399
6 Way	110	29228
6 Way	150 (178)	29231
8 Way	150 (178)	29235

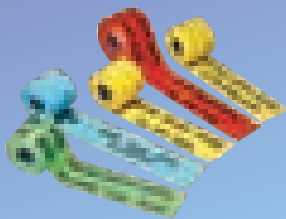
End Caps



Diameter (mm)	Code
63	29131
90*	29130
110	29129
120	29128
145	29127
160	29126
178	29168

*Subject to minimum order quantity and lead time

Marker Tape



Service	Colour	Code
Electric Cable	Yellow	34036
Water Main	Blue	34037
Gas Main	Yellow	34038
Telephone Cable	Green	34039
Foul Sewer	Red	34040
Street Lighting	Yellow	34041

365m Rolls.

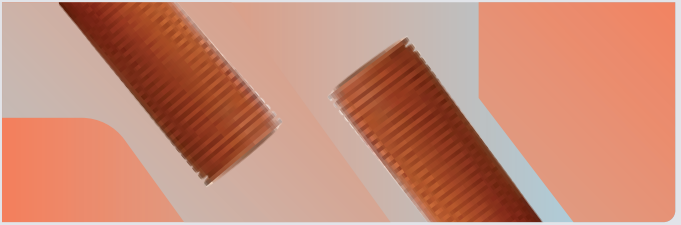
Lubricant



Size (Kg)	Code
1.0	50001
2.5	50002

Suitable for all types of push fit gravity pipe systems. We cannot guarantee the performance of the product if Naylor Lubricant is not used.

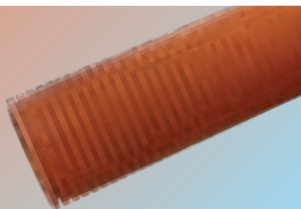
sewer



Naylor's MetroSewer range has been designed to ensure complete peace of mind in sewer applications that need to meet the rigorous testing requirements of the water industry.

Made from durable, high quality twin wall polypropylene, MetroSewer products are designed for adoptable sewer applications and meet the requirements of both EN 13476-3 (piping systems for non-pressure underground drainage and sewerage) and WIS 4-35-01 (specification for thermoplastics structured wall pipes – supplementary test requirements).

Twin Wall Plain Ended Pipe



ID (mm)	Length (m)	Material	Pack Qty	Code
150mm	3	PP	33	73101
150mm	6	PP	33	73104
225mm	3	PP	14	73102
225mm	6	PP	14	73105
300mm	3	PP	9	73103
300mm	6	PP	9	73106

Junctions



ID (mm)	Product Range	Angle	Material	Code
150mm	Equal Junction	45	PP	73401
150mm	Equal Junction	90	PP	73402
225mm	Equal Junction	45	PP	73405
225mm	Unequal Junction	45	PP	73403
300mm	Equal Junction	45	PP	73411
300mm	Unequal Junction	45	PP	73407
300mm	Unequal Junction	45	PP	73409

Couplings



ID (mm)	Length (mm)	Material	Pack Qty	Code
150mm	176mm	HDPE	10	73121
225mm	284mm	HDPE	1	73122
300mm	353mm	HDPE	1	73123

Bends



ID (mm)	Product Range	Angle	Material	Code
150mm	Double-Socket	15	PP	73115
150mm	Double-Socket	30	PP	73130
150mm	Double-Socket	45	PP	73145
150mm	Double-Socket	90	PP	73190
225mm	Double-Socket	15	PP	73125
225mm	Double-Socket	30	PP	73230
225mm	Double-Socket	45	PP	73245
225mm	Double-Socket	90	PP	73290
300mm	Double-Socket	15	PP	73315
300mm	Double-Socket	30	PP	73330
300mm	Double-Socket	45	PP	73345
300mm	Double-Socket	90	PP	73390

Socket Plug



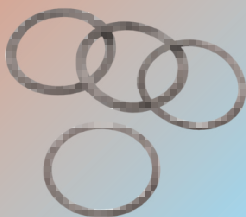
ID (mm)	Material	Pack Qty	Code
150mm	HDPE	10	73601
225mm	HDPE	1	73602

Invert Level Reducers



ID (mm)	OD (MM)	Product Range	Material	Pack Qty	Code
150mm	110mm	Spigot	PP	10	73501
150mm	160mm	Spigot	PP	10	73502
225mm	150mm	Double-Socketed	PP	1	73503
300mm	225mm	Double-Socketed	PP	1	73504

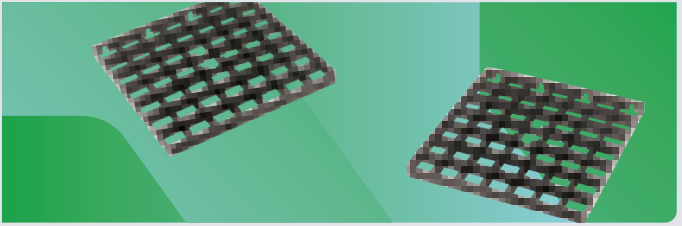
Sealing Rings



ID (mm)	Material	Pack Qty	Code	Cert.
100	EPDM	1	29115	-
150	EPDM	1	71342	BBA
225	EPDM	1	71343	BBA
300	EPDM	1	71344	BBA
375	EPDM	1	71345	BBA
450	EPDM	1	71346	BBA
600	EPDM	1	71347	BBA
750	EPDM	1	71099	BBA
900	EPDM	1	71102	BBA
1050	EPDM	1	71104	-

Two seals are required per joint

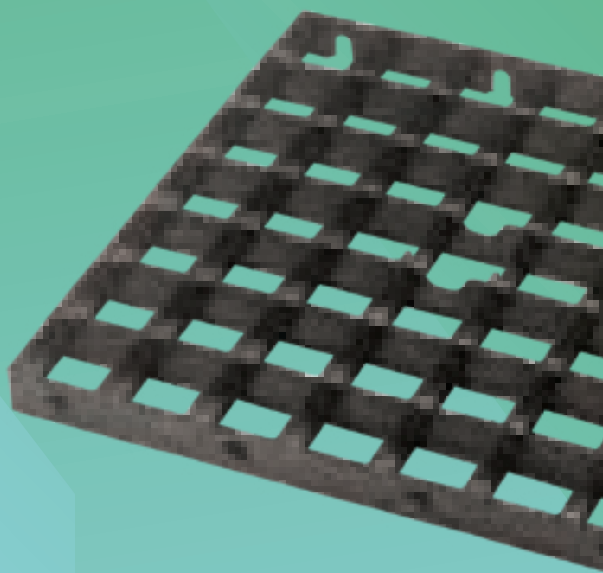
storm



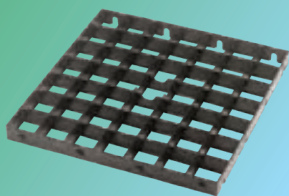
We designed our environmental and sustainable urban drainage solutions (SuDS) to mimic the way that water drains in the natural world, so that water run-off can more effectively be managed in different commercial and domestic spaces.

Our storm systems comprise: AquaVoid, a surface water attenuation and infiltration crate; EnviroFlow, a drainage and filtration unit; SmartSponge, a hydrocarbon removal system, and GroundGrid, a cellular paving system.

GroundGrid



GroundGrid



Description	MetroPave
Naylor Product Code	65110
Unfilled Load Bearing Capacity (Tonnes/m ²)	150
Filled Load Bearing Capacity (Tonnes/m ²)	800
Nominal Installed Size (mm)	481x481x40
Nominal Cell Size (mm)	66x66
Grids/m ²	4.32
Infill Volume/m ²	0.034m ³
Weight (kg)	0.7 (2.98 kg/m ²)
Infiltration (mm/hr)	>5000
Colour	Black
Material	Recycled HDPE/PP
Chemical Resistance	Excellent
UV Resistance	High
End Life	Recyclable
Connection Type	Side lugs and slots
Demarcation Block Compatibility	☒
Country Of Manufacture	UK
Pallet Details	48 pallets/load (1,340m ²)
Full Load Details	120/pallet (27.8m ²) 1 x 1 x 1.2m (110kg)

GroundGrid Plus

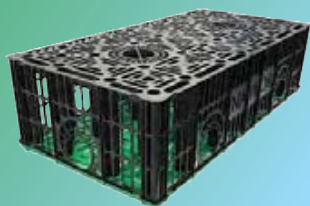


Description	MetroPave
Naylor Product Code	65111PLUS
Unfilled Load Bearing Capacity (Tonnes/m ²)	320
Filled Load Bearing Capacity (Tonnes/m ²)	1000
Nominal Installed Size (mm)	500x500x40
Nominal Cell Size (mm)	68x68
Grids/m ²	4
Infill Volume/m ²	0.035m ³
Weight (kg)	1.2 (4.8 kg/m ²)
Infiltration (mm/hr)	>5000
Colour	Black
Material	Recycled HDPE/PP
Chemical Resistance	Excellent
UV Resistance	High
End Life	Recyclable
Connection Type	Side lugs and slots
Demarcation Block Compatibility	☒
Country Of Manufacture	UK
Full Load Details	48 pallets/load (1440m ²)
Pallet Details	120/pallet (30m ²) 1 x 1 x 1.2m (170kg)

AquaVoid



AquaVoid



Manufactured from recycled polypropylene, AquaVoid is efficient at dealing with stormwater at or near its source. We can also make it without a geomembrane, so the system can be used as a soakaway.

The AquaVoid system is made with an interlocking modular cell design which sits on a purpose-designed baseplate. This can be stacked to create different void sizes. A geotextile removes debris from stormwater while a geomembrane enables water storage, when required.

With a 400kN/m² vertical loading, Aquavoid Metro can be used below service areas, car parks and landscaped areas.

Nominal crate size	1.2m (L) x 0.6m (W) x 0.3m (H)
Nominal base size	1.2m (L) x 0.6m (W) x 0.02m (H)
Coverage Rate	4.63 crates / m ³
Volume of crates	0.216 m ³
Capacity of crates	0.2063 m ³ (void ratio 95.5%)
Weight	10.5 kg
Short Term Compressive Strength	400 kN/m ² Vertical 83 kN/m ² Lateral
Maximum Cover	2.5m
Minimum Cover	0.5m landscape, 0.6m Cars, 0.8m HGV

EnviroFlow



EnviroFlow



The Naylor EnviroFlow provides a unique solution for land drainage, ground stabilisation, green infrastructure and filtration solutions that are proven to be technically superior to traditional systems.

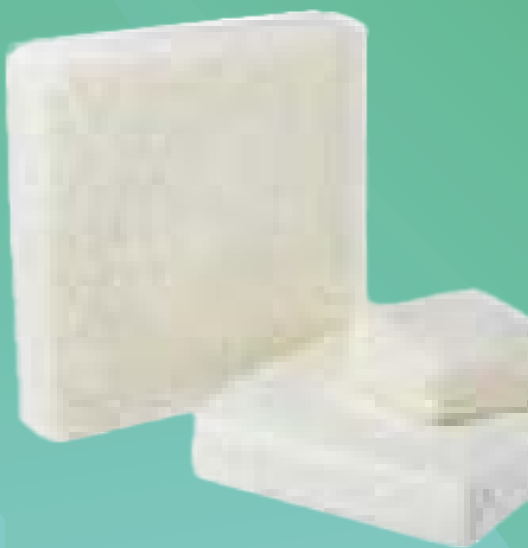
Made from 100% recycled thermo-plastics, EnviroFlow's products are permanent solutions that do not clog, are easy to install and handle and are high strength and long lasting.

EnviroFlow is a filtration and ground stabilisation solution designed for land drainage. It uses advanced capillary action to redirect stormwater in any direction without clogging.

Provided in planks measuring 1m x 220mm x 45mm thickness, the system can be used independently as permeable block 'paving' or as part of a green roof drainage system. It can also be used on embankments for ground stabilisation.

EnviroFlow is easy install, requires minimal maintenance, and benefits from high strength and durability.

SmartSponge

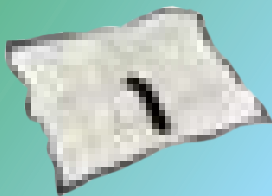


Smart Gulley Adaptor (SGA)



Code	Dimensions (mm)	Pack Qty
SGA01 - 12	SGA01 - 12	12
SMPK66-2.5	SMPK66-2.5	-

Passive Skimmers



Code	Dimensions (mm)	Pack Qty
PS1313	330x330	40
PS1818	457x457	20
PS2727	686x686	10

Lime Skimmers



Code	Length (m)	Dry Weight (kg)	Pack Qty
LS104-10	1.2	0.7	10
LS110-04	3	1.9	4
LS303-04	1.2	2.2	4
LS308-04	2.4	4.4	4
LS408-04	2.4	5.9	4

Smart Filter Chamber



Code	Dimensions (m)	No. of 380x380 smart paks	Max flow (l/s)	Max oil capacity (litres)
SF03.1A	0.8 x 1.2 x 1.2	4	44	48
SF03.1B	0.8 x 1.2 x 1.2	8	88	96
SF03.2A	1.2 x 1.8 x 2.0	12	130	144
SF03.2B	1.2 x 1.8 x 2.0	24	265	288
SF03.2C	1.2 x 1.8 x 2.0	32	350	384
SF03.3A	1.2 x 1.8 x 2.0	40	425	480

Smart Brake



Code	Dimensions (mm)	Pack Qty
SB01-30302	360x330x330	1
SB02-38382	400x400x400	1

Smart Stop



Code	Dimensions (mm)	Pack Qty
SS01-30302	360x330x330	1
SS01-38382	400x400x400	1



Deliveries

Delivery Times

All standard deliveries are made between the hours of 8am and 4pm unless advised at the time of order.

Timed and out of hours deliveries are available for an extra charge.

Delivery Discrepancies

Claims for transit damage or shortage cannot be accepted unless advised within 72 hours of unloading by email to queries@naylor.co.uk

Claims reported after 72 hours will not be accepted.

Vehicle Waiting Time

It is a condition of every delivery that when the vehicle reaches its destination, the customer shall unload promptly.

In the event of delays, a waiting time charge will apply as per our standard terms and conditions:-

If a vehicle is waiting in excess of 1 hour for the customer to commence unloading, the following charges will be added to the invoice:-

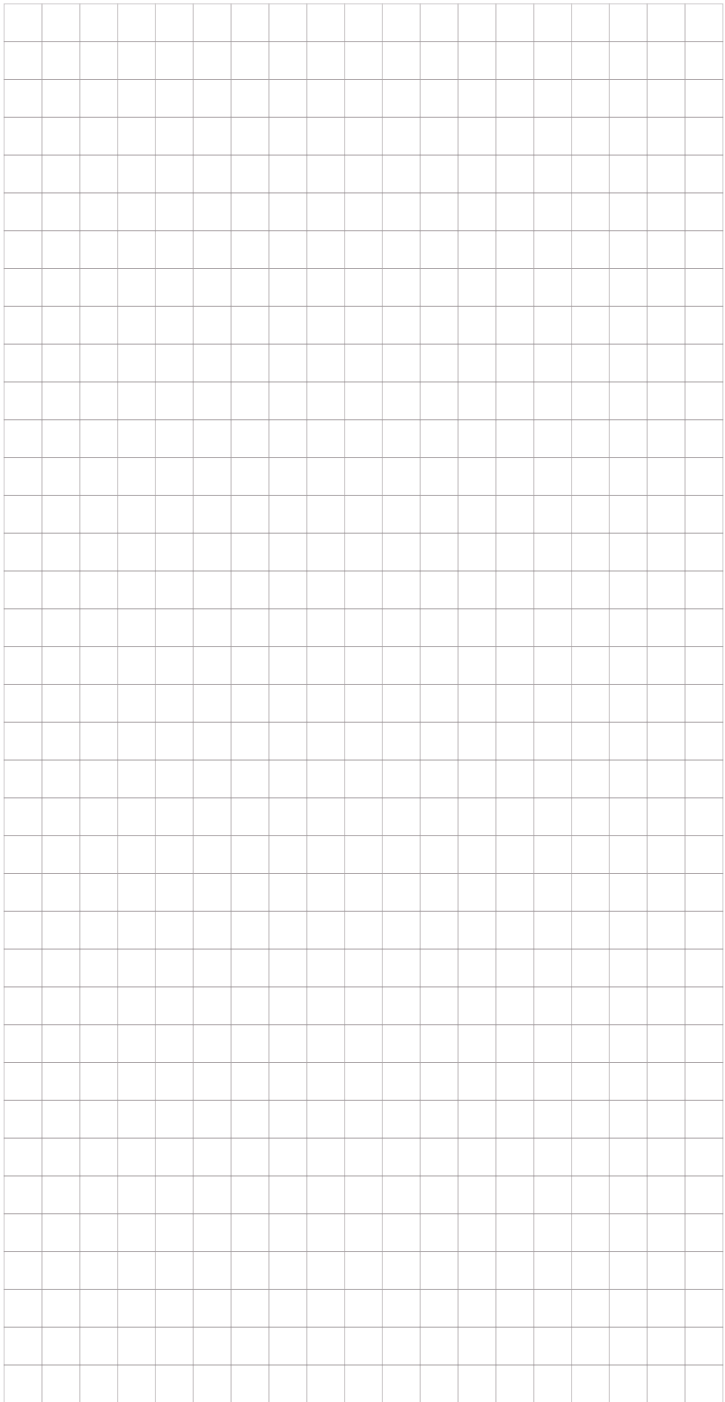
Please see our website for a copy of our Terms & Conditions



Notes

Notes

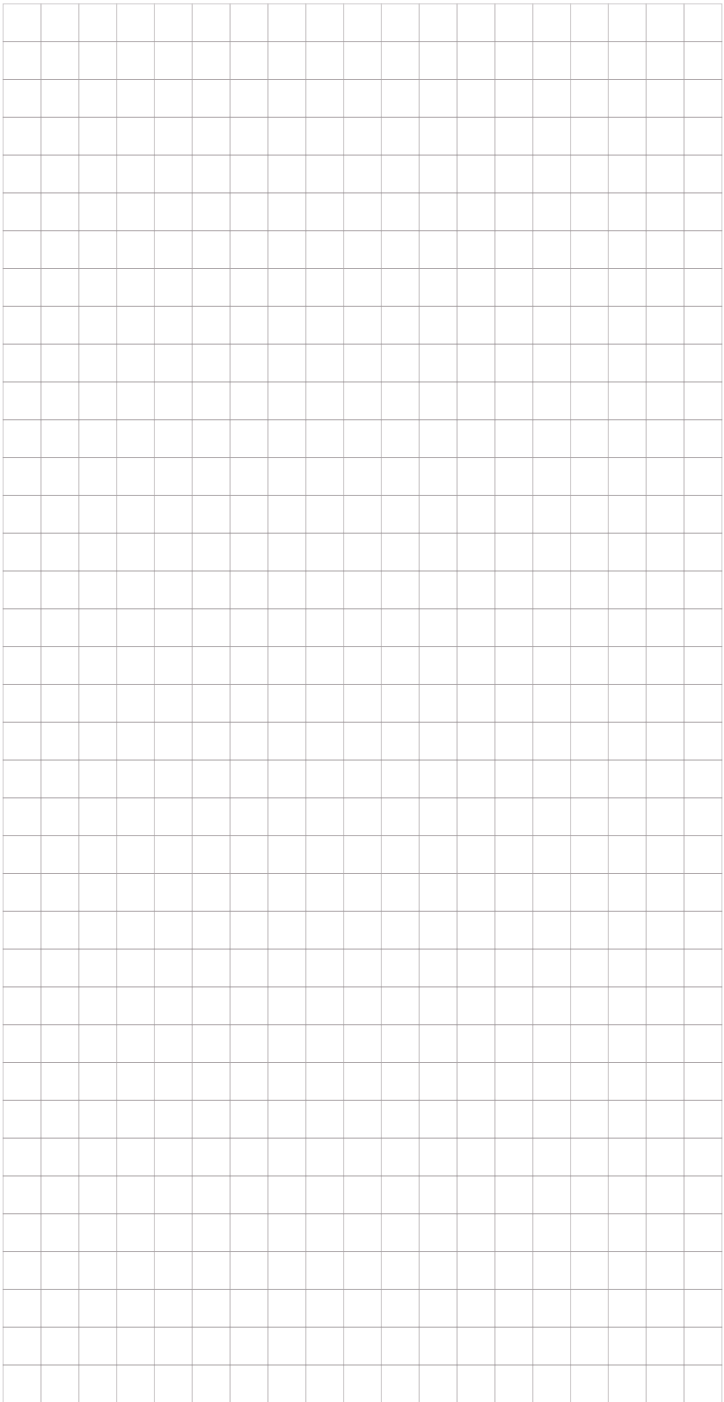
Notes



Notes



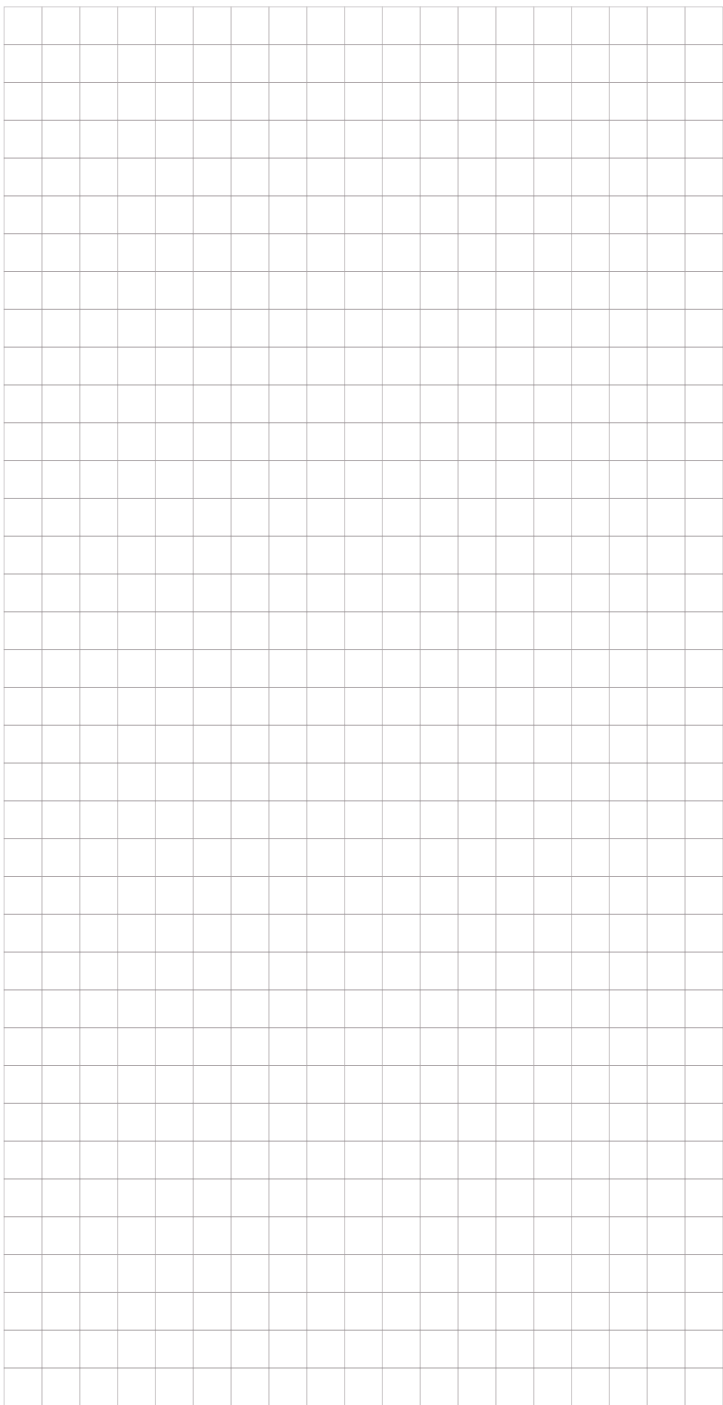
Notes



Notes

Notes

Notes



Notes

Sales Contacts



Contracts Manager North

Dawn Morfitt


 07773 198 157

 dawn.morfitt@naylor.co.uk



Contracts Manager South

Helen Hall

 07774 450 814

 helen.hall@naylor.co.uk



National Sales Manager Power & Sewer

Gary Bartram

☎ 07870 918 336

✉ gary.bartram@naylor.co.uk



National Sales Manager Power & Sewer

Abi Pointon

☎ 07774 450 817

✉ abi.pointon@naylor.co.uk



Senior Contract Development Manager

Mark Owen

☎ 07741 260 672

✉ mark.owen@naylor.co.uk

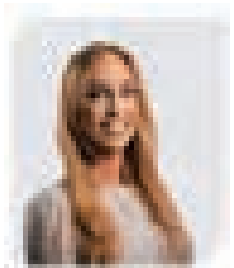


Contract Development Manager

Joe Allen

☎ 07973 639 706

✉ joe.allen@naylor.co.uk



National Merchant Development Manager

Zoe Hayes

☎ 07580 848 620

✉ zoe.hayes@naylor.co.uk

Contact



England

help@naylor.co.uk
0330 0563355

Clough Green,
Cawthorne, Barnsley,
South Yorkshire, S75 4AD

Scotland

scotland@naylor.co.uk
01592 717900

Off Sea Road, Methil,
Leven, Fife, KY8 3DE