

naylor



Product Guide



made in the UK

naylor.co.uk



<u>Introduction to Naylor</u>	03
<u>Our Product Ranges</u>	04
<u>Drain</u>	05
<u>Duct</u>	16
<u>Sewer</u>	29
<u>Storm</u>	31
<u>Deliveries</u>	37
<u>Contact</u>	38

Engineered for life

Naylor provides a comprehensive range of high quality, high performance drain, duct, sewer and storm systems for use in the highways, power, utilities, commercial, industrial, housing, rail and agriculture sectors to enable essential infrastructure.

An entrepreneurial, modern business, Naylor uses its comprehensive market knowledge to support the delivery of construction and major infrastructure projects all over the country. Having a reputation for being straightforward, supportive and easy-to-deal-with, Naylor are committed to making significant, ongoing organisational investment to further develop product offer, reducing carbon emissions and continuing to meet the needs of the customer.



Our four product ranges

We design, develop and manufacture high performance construction products within the four categories of drain, storm, duct and sewer. Our team is continually searching for new ways to improve products, services and processes. Their enthusiasm is backed by significant investment in R&D and state-of-the-art manufacturing facilities.

This enables us to provide our customers with innovative products which are backed by stringent testing and industry certifications.

drain

Our Drain range comprises high-density polyethylene (HDPE) high performance twin wall pipe products which are designed for use with all non-pressure, surface and sub-surface drainage applications.

storm

Our environmental and sustainable urban drainage (SuDS) systems to mimic the way water drains in the nature world, so water run off can be more effectively managed in commercial and domestic spaces.

duct

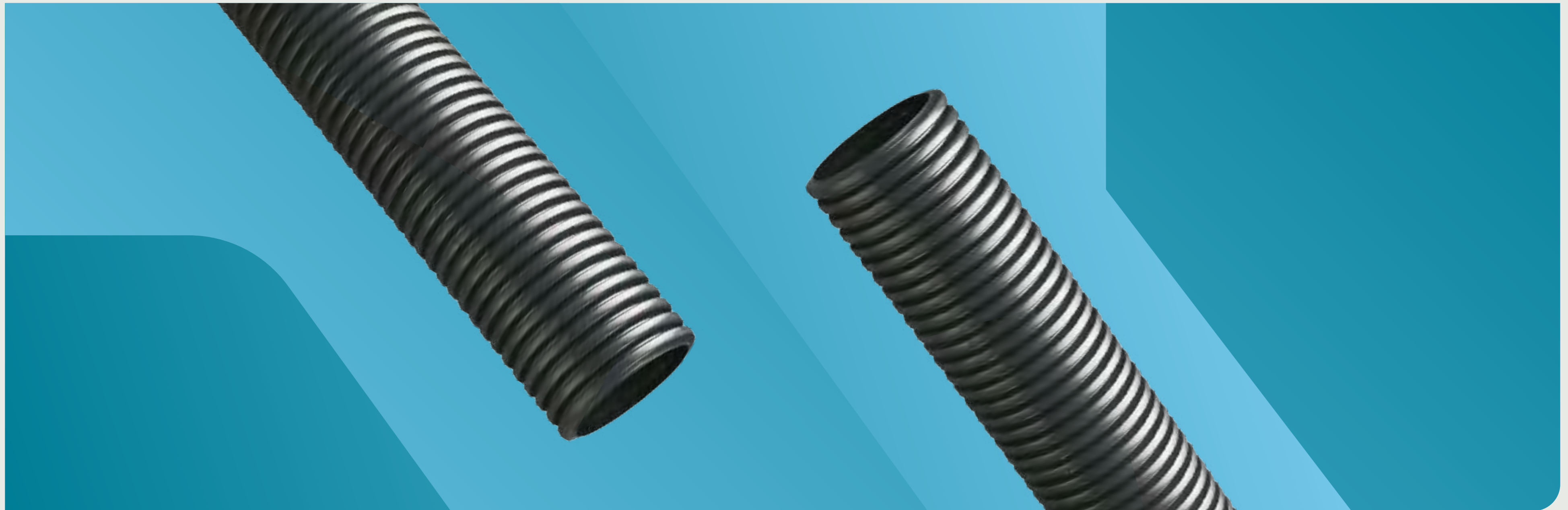
Our plastic ducting systems are designed to support essential infrastructure including the civils, utility (power) and telecommunication markets.

sewer

Our adoptable sewer range is developed with strength, versatility and reliability in mind, MetroSewer offers an unrivalled and comprehensive foul water and surface water system with Naylor's excellent reputation for reliability, quality and value.

drain

Naylor's range of high performance drain systems comprises MetroDrain, MetroDrain LC, N-Drain and Land Drain. Our drain systems are suitable for use in wide range of applications including: highways, rail, infrastructure, commercial and industrial projects, car parks, retail areas, golf courses and sports fields and agricultural projects.



MetroDrain

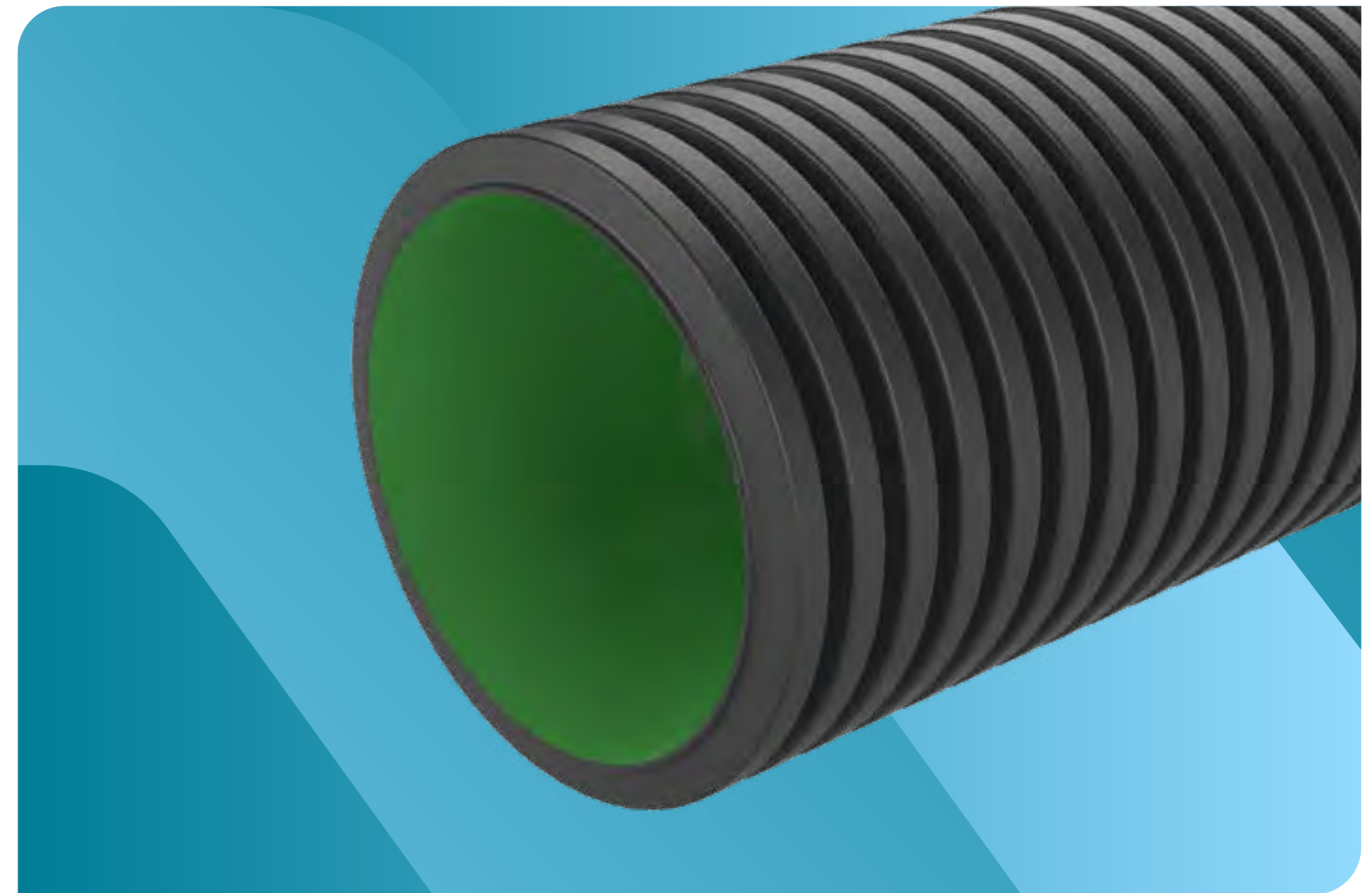
Perfect for use in environmental water management systems.

Designed for environmental water management, MetroDrain is a BBA certified, sub-surface drainage system used nationwide, including by National Highways. MetroDrain can be used with pumps and sampling chambers, catchpits, soakaways, manholes and storm water attenuation systems to collect and dispose of surface and sub-surface storm water.

Available in sizes 150mm to 1050mm in solid, perforated or half perforated configurations, MetroDrain meets the specific requirements of the Highways Agency Manual of Contract Documents for Highway Works, is an approved alternative to the products in Table 5/1 of the Specification for Highway Works and can be adopted under the Highways Act (1980).

Why MetroDrain?

- Smooth bore for superior hydraulic flow
- Corrugated outer wall for additional strength
- Available in filter, perforated or half-perforated configurations
- Less brittle, less vulnerable to crack propagation
- Suitable for cold weather applications
- Excellent impact and abrasion resistance
- Resistance to differential ground settlement
- Recognised alternative to concrete and clayware pipes
- Easy-to-cut to required length and minimal jointing
- HAPAS approved by the BBA



MetroDrain^{LC}

All the performance,
half the carbon*

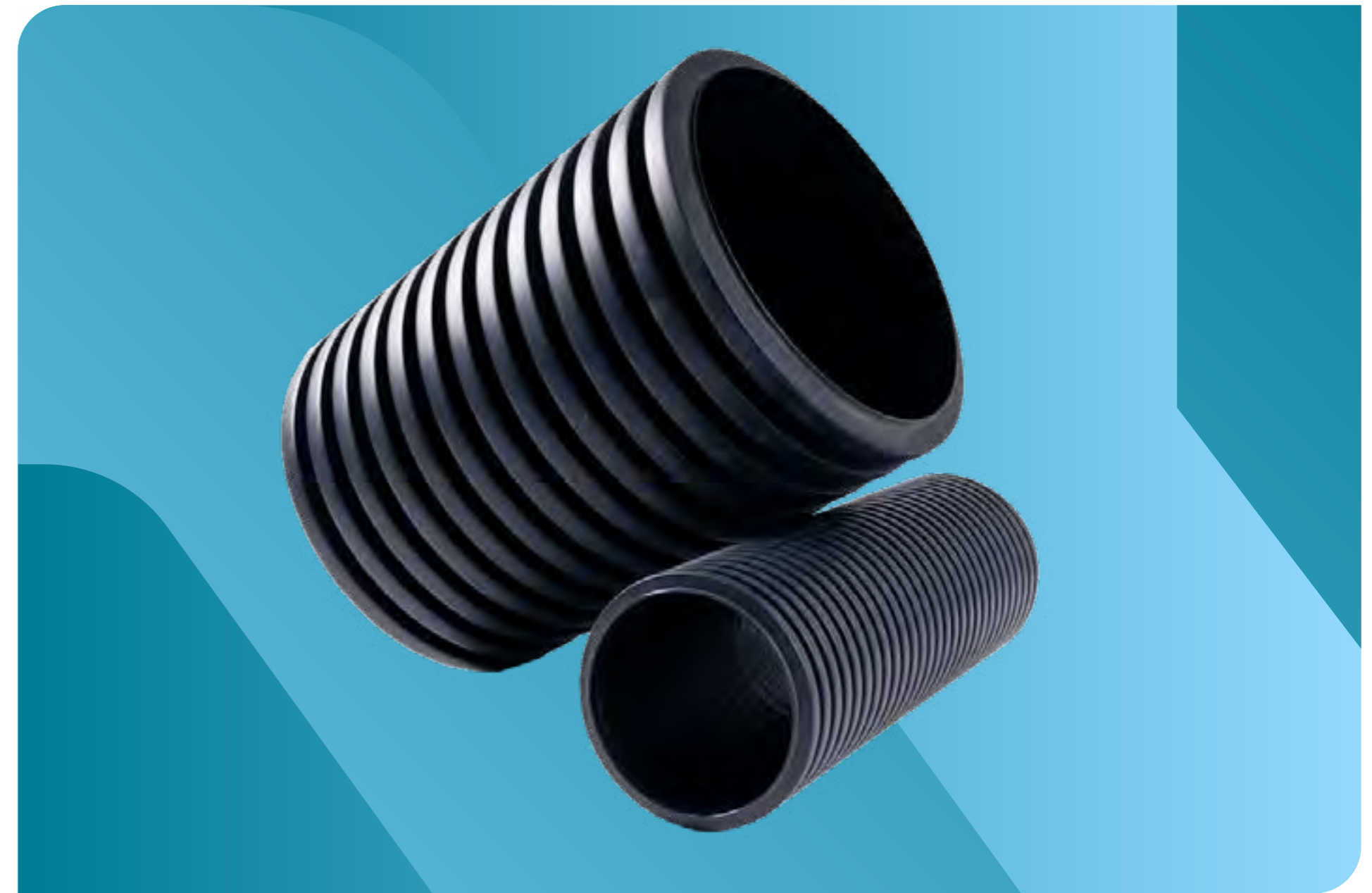
*Average 48% reduction in kgCO₂e

MetroDrain LC is our newest product in Naylor's drainage range. With all the benefits of the original MetroDrain system, but manufactured with 48% less carbon, the new system has been designed to give customers a more environmentally friendly solution, without losing any of the performance.

MetroDrain LC is also just as easy to install, handle and transport, and has been through the same stringent testing and certification process.

As one of the UK's largest users of recycled HDPE, Naylor ensures recycled and repossessed materials are incorporated into our products whenever possible and when it does not compromise product quality. All materials are subject to stringent quality checks, and internal mixing and blending procedures are strictly controlled and monitored.

Product	HDPE	kgCO ₂ e/m of pipe					
		DN150	DN225	DN300	DN375	DN450	DN600
MetroDrain	Virgin & Recycled HDPE	1.8	3.9	6.5	9.6	14	24.1
MetroDrain ^{LC}	Recycled HDPE	1.0	2.1	3.1	4.7	6.8	13.2



N-Drain

A lighter-duty drainage system for non-BBA applications including agriculture.

Naylor's non-BBA twin wall drainage pipe system, N-Drain, is available in solid, fully perforated or half perforated designs. Although N-Drain is a 'non-sealed' system, seals can be used to prevent soil ingress.

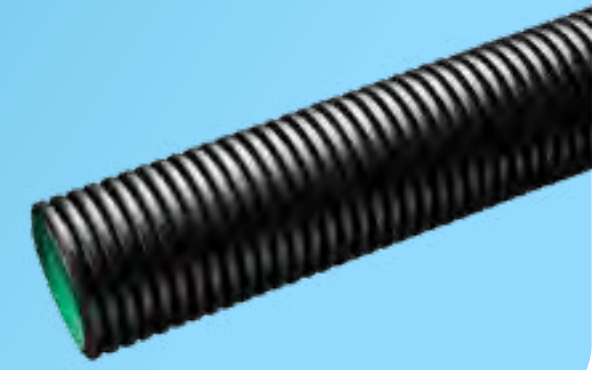
A lighter-duty drainage system, N-Drain is suitable for most non-BBA applications, can be cut to length and is available in diameters between 100mm to 600mm.

Why N-Drain?

- Lighter duty drainage system
- Wide range of fittings
- Wide range of pipe sizes
- Can be cut to length without the need for special tools
- Competitively priced for agricultural and private use
- Fabricated fittings available upon request



HDPE Premium Twin Wall Drainage System



ID (mm)	Nom OD (mm)	Length (m)	Pack Qty	Nom Wt (kg/m)	Code	Cert.
Solid/plain ended						
150	173	6	33	1.4	71302	BBA
225	265	6	14	3.0	71303	BBA
300	353	6	9	5.0	71304	BBA
375	432	6	5	7.4	71305	BBA
450	518	6	4	10.8	71306	BBA
600	692	6	28/Load	18.6	71307	BBA
750	860	6	18/load	26.8	71358	BBA
900	1034	6	8/load	36.0	71359	BBA
1050	1189	6	8/load	51.2	71360	-

ID (mm)	Nom OD (mm)	Length (m)	Pack Qty	Nom Wt (kg/m)	Code	Cert.
Solid/socketed						
750	918‡	3	36/load	26.8	71363	BBA
900	1093‡	3	16/load	36.0	71364	BBA
1050	1255‡	3	16/load	51.2	71331	-
750	918‡	6	18/load	26.8	71311	BBA
900	1093‡	6	8/load	36.0	71321	BBA
1050	1255‡	6	8/load	51.2	71328	-

‡Nominal OD including socket

ID (mm)	Nom OD (mm)	Length (m)	Pack Qty	Nom Wt (kg/m)	Code	Cert.
Perforated/plain ended						
150	173	6	33	1.4	71312	BBA
225	265	6	14	3.0	71313	BBA
300	353	6	9	5.0	71314	BBA
375	432	6	5	7.4	71315	BBA
450	518	6	4	10.8	71316	BBA
600	692	6	28/Load	18.6	71317	BBA
750	860	6	18/load	26.8	71361	BBA
900	1034	6	8/load	36.0	71137	BBA
1050	1189	6	8/load	51.2	71166	-

ID (mm)	Nom OD (mm)	Length (m)	Pack Qty	Nom Wt (kg/m)	Code	Cert.
Perforated/socketed						
750	918‡	3	36/load	26.8	71319	BBA
900	1093‡	3	16/load	36.0	71320	BBA
1050	1255‡	3	16/load	51.2	71329	-
750	918‡	6	18/load	26.8	71319	BBA
900	1093‡	6	8/load	36.0	71320	BBA
1050	1255‡	6	8/load	51.2	71329	-

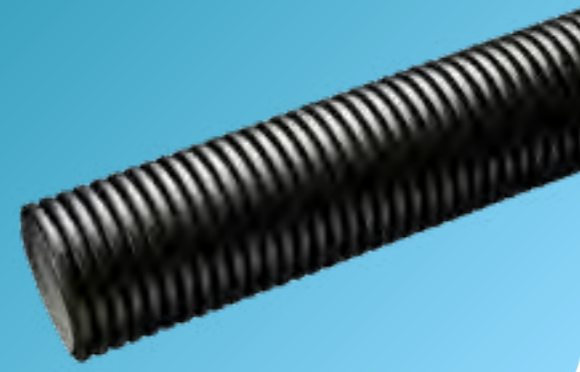
‡Nominal OD including socket

ID (mm)	Nom OD (mm)	Length (m)	Pack Qty	Nom Wt (kg/m)	Code	Cert.
Half Perforated/plain ended						
150	173	6	33	1.4	71322	BBA
225	265	6	14	3.0	73123	BBA
300	353	6	9	5.0	71324	BBA
375	432	6	5	7.4	71375	BBA
450	518	6	4	10.8	71376	BBA
600	692	6	28/Load	18.6	71377	BBA
750	860	6	18/load	26.8	71126	BBA
900	1034	6	8/load	36.0	71155	BBA
1050	1189	6	8/load	51.2	71183	-

ID (mm)	Nom OD (mm)	Length (m)	Pack Qty	Nom Wt (kg/m)	Code	Cert.
Half Perforated/socketed						
750	918‡	3	36/load	26.8	71381	BBA
900	1093‡	3	16/load	36.0	71327	BBA
1050	1255‡	3	16/load	51.2	71327	-
750	918‡	6	18/load	26.8	71311	BBA
900	1093‡	6	8/load	36.0	71321	BBA
1050	1255‡	6	8/load	51.2	71328	-

‡Nominal OD including socket

MetroDrain^{LC}

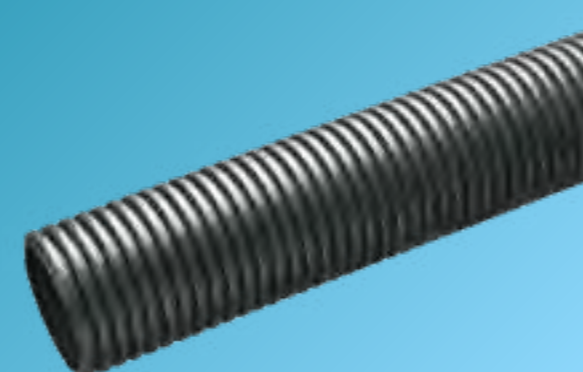


HDPE Low carbon Twin Wall Carrier Drainage System

ID (mm)	Nom OD(mm)	Length (m)	Pack Qty	Nom Wt (kg/m)	Code
Solid/plain ended					
150	173	6	33	1.6	74202
225	265	6	14	3.3	74203
300	353	6	9	5.0	74204
375	432	6	5	7.4	74205
450	518	6	4	10.8	74206
600	692	6	28/Load	21.0	74207

Performance Testing	Metrodrain	Metrodrain ^{LC}
Material properties & specification	✓	✓
Dimensions	✓	✓
Ring stiffness	✓	✓
Creep ratio	✓	✓
Resistance to longitudinal bending	✓	✓
Impact strength	✓	✓
Rodding resistance	✓	✓
Water jetting	✓	✓
Leaktightness including subject to diameter distortion and angular deflection	✓	✓

N-Drain Pipes



HDPE Agricultural Twin Wall Carrier/Filter Drainage System

ID (mm)	Nom OD(mm)	Length (m)	Pack Qty	Nom Wt (kg/m)	Code
Unperforated/plain ended					
100	117	6	85	0.63	71107
150	173	6	33	1.18	71260
225	267	6	14	2.52	71076
300	354	6	9	3.9	71075
375	433	6	5	5.59	71117
450	521	6	4	9.1	71118
600	695	6	28/Load	17.05	71093

ID (mm)	Nom OD(mm)	Length (m)	Pack Qty	Nom Wt (kg/m)	Code
Solid/plain ended					
100	117	6	85	0.63	71108
150	173	6	33	1.18	71259
225	267	6	14	2.52	71080
300	354	6	9	3.9	71079
375	433	6	5	5.59	71119
450	521	6	4	9.1	71120
600	695	6	28/Load	17.05	71121

*Half Perforated subject to minimum quantities and lead time.

Accessories

The following accessories fit our MetroDrain, MertoDrain LC and N-Drain products.

- T Junctions
- Y Junctions
- Bends
- Level Invert Reducers
- Couplings
- Sealing Rings
- Ribbed Road Gullies
- Yard Gully
- Gully Connection Pipe
- Outlet Adapter
- End Caps
- Lubricant

T Junctions



ID (mm)	Code	Cert.	ID (mm)	Code	Cert.
90° Junctions/socketed			90° Junctions/plain ended		
100 x 100	71406	-	750 x 150	71834	-
150 x 100	71604	BBA	750 x 225	71836	-
150 x 150	71585	BBA	750 x 300	71838	-
225 x 150	71587	BBA	750 x 375	71840	-
225 x 225	71588	BBA	750 x 450	71842	-
300 x 150	71624	BBA	750 x 600	71844	-
300 x 225	71626	BBA	750 x 750	71846	-
300 x 300	71628	BBA	900 x 150	71854	-
375 x 150	71634	BBA	900 x 225	71856	-
375 x 225	71636	BBA	900 x 300	71858	-
375 x 300	71638	BBA	900 x 375	71860	-
375 x 375	71640	BBA	900 x 450	71862	-
450 x 150	71644	BBA	900 x 600	71864	-
450 x 225	71646	BBA	900 x 750	71866	-
450 x 300	71648	BBA	900 x 900	71868	-
450 x 375	71650	BBA	1050 x 150	71884	-
450 x 450	71652	BBA	1050 x 225	71886	-
600 x 150	71664	BBA	1050 x 300	71888	-
600 x 225	71666	BBA	1050 x 375	71890	-
600 x 300	71668	BBA	1050 x 450	71892	-
600 x 375	71670	BBA	1050 x 600	71894	-
600 x 450	71672	BBA	1050 x 750	71896	-
600 x 600	71674	BBA	1050 x 900	71898	-
			1050 x 1050	71900	-

Requires sealing rings on all sealed systems/couplers.

Y Junctions



ID (mm)	Code	Cert.	ID (mm)	Code	Cert.
45° Junctions/socketed			45° Junctions/plain ended		
100 x 100	-	BBA	750 x 150	71833	-
150 x 100	71698	BBA	750 x 225	71835	-
150 x 150	71581	BBA	750 x 300	71837	-
225 x 150	71586	BBA	750 x 375	71839	-
225 x 225	71584	BBA	750 x 450	71841	-
300 x 150	71623	BBA	750 x 600	71843	-
300 x 225	71625	BBA	750 x 750	71845	-
300 x 300	71627	BBA	900 x 150	71853	-
375 x 150*	71633	BBA	900 x 225	71855	-
375 x 225*	71635	BBA	900 x 300	71857	-
375 x 300*	71637	BBA	900 x 375	71859	-
375 x 375*	71639	BBA	900 x 450	71861	-
450 x 150*	71643	BBA	900 x 600	71863	-
450 x 225*	71645	BBA	900 x 750	71865	-
450 x 300*	71647	BBA	900 x 900	71867	-
450 x 375*	71649	BBA	1050 x 150	71883	-
450 x 450*	71651	BBA	1050 x 225	71885	-
600 x 150*	71663	BBA	1050 x 300	71887	-
600 x 225*	71665	BBA	1050 x 375	71889	-
600 x 300*	71667	BBA	1050 x 450	71891	-
600 x 375*	71669	BBA	1050 x 600	71893	-
600 x 450*	71671	BBA	1050 x 750	71895	-
600 x 600*	71673	BBA	1050 x 900	71897	-
			1050 x 1050	71899	-

Requires sealing rings on all sealed systems/couplers.

Bends



ID (mm)	Bend	Code	Cert.
100	11¼	71401	-
100	22½	71402	BBA
100	45	71403	BBA
100	90	71404	BBA
150	11¼	71351	BBA
150	22½	71352	BBA
150	45	71353	BBA
150	90	71354	BBA
225	11¼	71563	BBA
225	22½	71573	BBA
225	45	71583	BBA
225	90	71593	BBA
300	11¼	71504	BBA
300	22½	71514	BBA
300	45	71524	BBA
300	90	71534	BBA
375	11¼	71505	BBA
375	22½	71515	BBA
375	45	71525	BBA
375	90	71535	BBA
450	11¼	71506	BBA
450	22½	71516	BBA
450	45	71526	BBA
450	90	71536	BBA
600	11¼	71507	BBA
600	22½	71517	BBA
600	45	71527	BBA
600	90	71537	BBA
†750	11¼	71508	-
†750	22½	71518	-
†750	45	71528	-
†750	90	71538	-
†900	11¼	71509	-

ID (mm)	Bend	Code	Cert.
†900	22½	71519	-
†900	45	71529	-
†900	90	71539	-
†1050	11¼	71510	-
†1050	22½	71520	-
†1050	45	71530	-
†1050	90	71540	-

† Plain ended.

Level Invert Reducers



ID (mm)	Code
Socketed	
150 x 100	71701
225 x 150	71703
300 x 150	71705
300 x 225	71706
375 x 150	71708
375 x 225	71709
375 x 300	71710
450 x 150	71712
450 x 225	71713
450 x 300	71714
450 x 375	71715
600 x 150	71717
600 x 225	71718
600 x 300	71719
600 x 375	71720
600 x 450	71721
750 x 150	71742
750 x 225	71743
750 x 300	71744
750 x 375	71745
750 x 450	71746
750 x 600	71747
900 x 150	71752
900 x 225	71753
900 x 300	71754
900 x 375	71755
900 x 450	71756
900 x 600	71757
900 x 750	71758
1050 x 150	71772
1050 x 225	71773
1050 x 300	71774
1050 x 375	71775

ID (mm)	Code
1050 x 450	71776
1050 x 600	71777
1050 x 750	71778
1050 x 900	71779

Outlet Adaptor



OD (mm)	Code	
160/178*	67012	
Adaptor Coupling		
178/172	71700	
160mm Outlet Connects to		
150mm ID	178mm OD	Twinwall
150mm ID	178mm OD	Ultra-Rib
150mm ID	178mm OD	Clayware
150mm ID	160mm OD	Quantum
-	160mm OD	PVC-u
-	160mm OD	Land Drain
-	160mm OD	Gully Connection Pipe
-	178mm OD	Gully Connection Pipe
178mm Outlet Connects to		
150mm ID	160mm OD	Quantum
-	160mm OD	PVC-u
-	160mm OD	Land Drain
-	160mm OD	Gully Connection Pipe

Couplings



ID (mm)	Dimension A (mm)	Code	Cert.
100*	-	29101	-
150	176	71332	BBA
225	284	71333	BBA
300	353	71334	BBA
375	330	71335	BBA
450	396	71336	BBA
600	485	71337	BBA
750	700	71045	BBA
900	800	71047	BBA
1050	900	71050	-

One coupling and two seals are required per joint if coupling used.

Ribbed Road Gullies



All Plastic HDPE Gullies are supplied complete with internal trap and rodding eye. Supplied into stock in pack quantities only. 100% recycled.

Pack Qty	DN Internal (Nominal)	Internal Depth (Nominal)	DN Outlet (Nominal)	Code
20	450	900	178	67003
20	450	900	160	67004
20	450	750	160	67005
20	450	750	178	67009
20	375	750	178	67002

Yard Gully



Supplied into stock in pack quantities only. 100% recycled.

Pack Qty	Diameter (mm)	Hight	DN	Code
30	300	600	110	67006

Sealing Rings



ID (mm)	Material	Pack Qty	Code	Cert.
100	EPDM	1	29115	-
150	EPDM	1	71342	BBA
225	EPDM	1	71343	BBA
300	EPDM	1	71344	BBA
375	EPDM	1	71345	BBA
450	EPDM	1	71346	BBA
600	EPDM	1	71347	BBA
750	EPDM	1	71099	BBA
900	EPDM	1	71102	BBA
1050	EPDM	1	71104	-

Two seals are required per joint

Gully Connection Pipe



Diameter (mm)	Length (m)	Pallet Qty	Code
160	25	5	67011
178	25	5	67008

End Caps



Size (mm)	Code
150	71802
225	71803
300	71804
375	71805
450	71806
600	71807

Lubricant



Size (kg)	Code
1.0	50001
2.5	50002

Suitable for all types of push fit gravity pipe systems. We cannot guarantee the performance of the product if Naylor Lubricant is not used.

Land Drain

Quick and easy to install with excellent water flow.

The range of Land Drain systems from Naylor is designed specifically to reduce surface water run-off in agricultural applications. Our Land Drain System comprises a single wall, corrugated pipe manufactured from high-density polyethylene (HDPE).

Flexible, durable and easy to lay, Land Drain pipes are available in sizes ranging from 60mm to 160mm diameter, and can be provided in coil lengths ranging from 25 metres to 150 metres. Pipes are available in solid and perforated designs, and all pipe and fittings in the system are available in Kitemarked BS4962 versions.

Why Land Drain?

- Quick and easy to install
- Strong (manufactured from HDPE)
- Produced from 100% recycled materials
- Available in KiteMarked (BS4926) and non-KiteMarked solutions
- Available in sizes 60mm to 160mm diameter
- Available in coils up to 150m in length
- Available with geotextile wrap
- Suitable for agricultural, sports field and domestic applications



Land Drain



External Dia (mm)	Length (m)	Pack Qty	Code
Solid – Black			
60	25	12	68029
60	50	8	68032
60	150	5	68033
80	25	9	68034
80	50	7	68035
80	100	4	68036
100	25	7	68037
100	50	6	68038
100	100	4	68039
160	50	4	68007
160†	35	-	68094

Manufactured in accordance with BS4962.
†Scotland only.

60	50	8	68042
60	150	5	68043
80	25	9	68048
80	50	7	68053
80	100	4	68049
100	25	7	68050
100	50	6	68044
100	100	4	68045
160	50	4	68009
160†	35	-	68046

Manufactured in accordance with BS4962.
†Scotland only.

Kitemarked Land Drain



External Dia (mm)	Length (m)	Pack Qty	Code	Cert.
Perforated – Black				
60*	50	8	68202	BS
60*	150	5	68204	BS
80*	25	9	68301	BS
80*	50	7	68302	BS
80*	100	4	68303	BS
100*	25	7	68401	BS
100*	50	6	68402	BS
100*	100	4	68403	BS
160*	50	4	68502	BS

Kitemarked to BS4962

Solid – Black				
60*	150	5	68214	BS
80*	100	4	68313	BS
100*	100	4	68413	BS
160*	50	4	68512	BS

*Marked Naylor BS4962

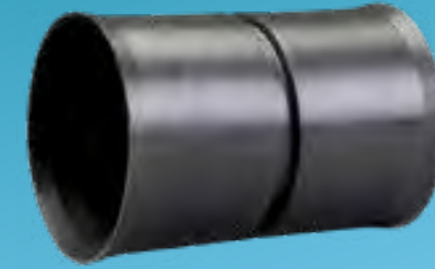
Wrapped Land Drainage

Geotextile wrapped land drainage coil prevents ingress of very fine particles, such as sand and sediment.



External Dia (mm)	Length (m)	Pack Qty	Code
Perforated – Black			
80	50	5	68077
100	50	5	68118
160	50	3	68119

Land Drain Connectors



External Dia. (mm)	Code
60	68086
80	68087
100	68062
160	68063

End Caps



External Dia (mm)	Code
60	68090
80	68088
100	68091
160	68109

Land Drain Universal Fittings



Description	Pack Qty	Code
60/80/100 Multi Junction	50	68064
60/160 Multi Junction	10	68061

duct

Naylor offer a technically advanced and comprehensive range of ducting systems. With production facilities in both England and Scotland we are well placed to meet the needs of civils, utility, telecommunication markets and others.

The Naylor ducting system comprises three main components: ducting pipes, access chambers, covers and frames.

Naylor 50-150mm ducting is manufactured to BBA and BS EN61386 as required by the Highways Agency.



MetroDuct

Designed for essential infrastructure.

Our MetroDuct system is designed to support the development of essential infrastructure. Used in high performance and demanding applications, our products provide reliable connectivity in everything from traffic signalling to power supplies.

Our Duct range comprises:

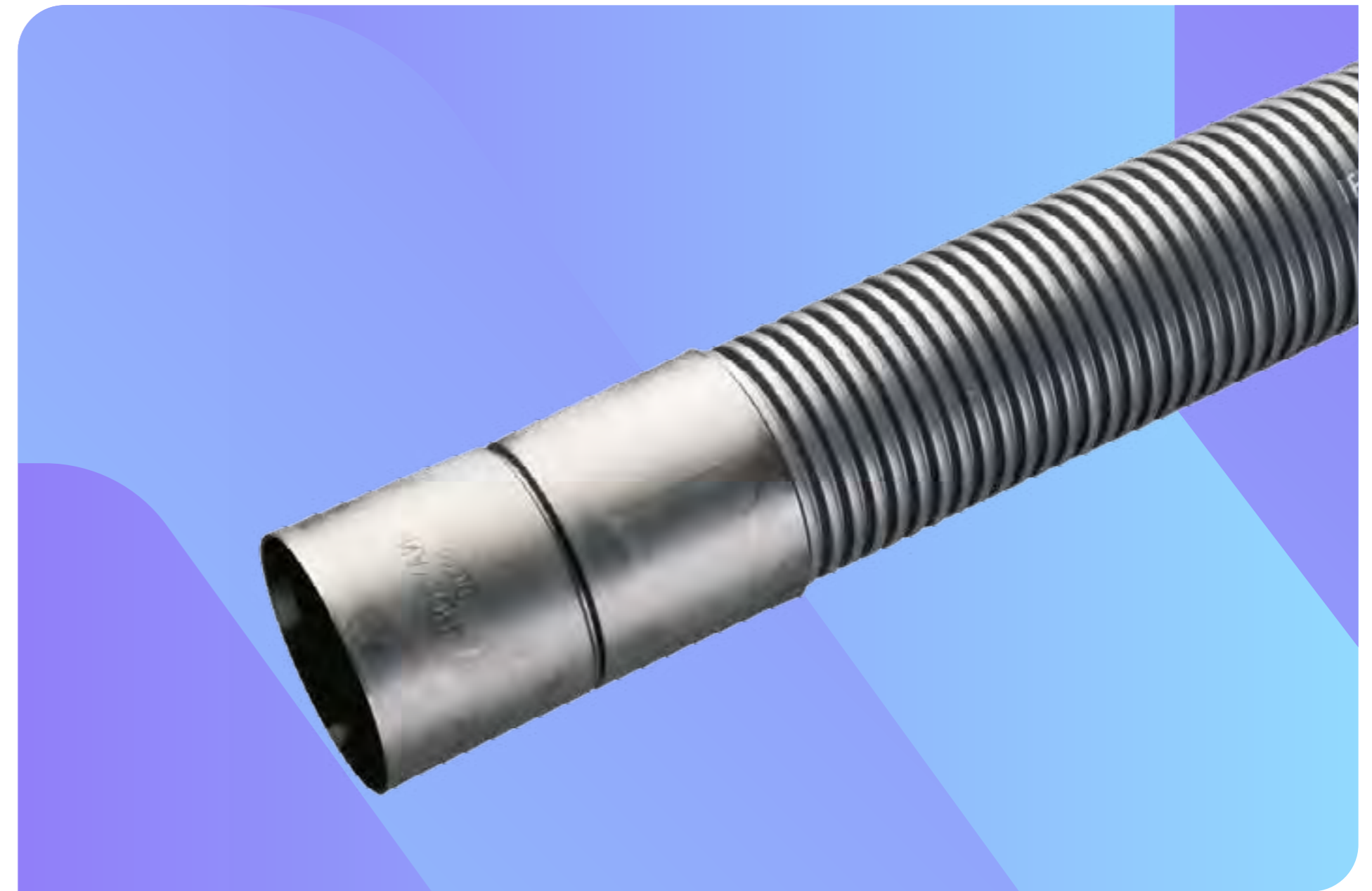
- Class 1 Polypropylene MetroDuct
- Class 2 and 3 HDPE MetroDuct
- Class 1 and 2 PVC duct
- Fittings

NJUG Colour Coding

All MetroDuct Twin Wall Pipes up to 150mm Manufactured to BS EN 61386

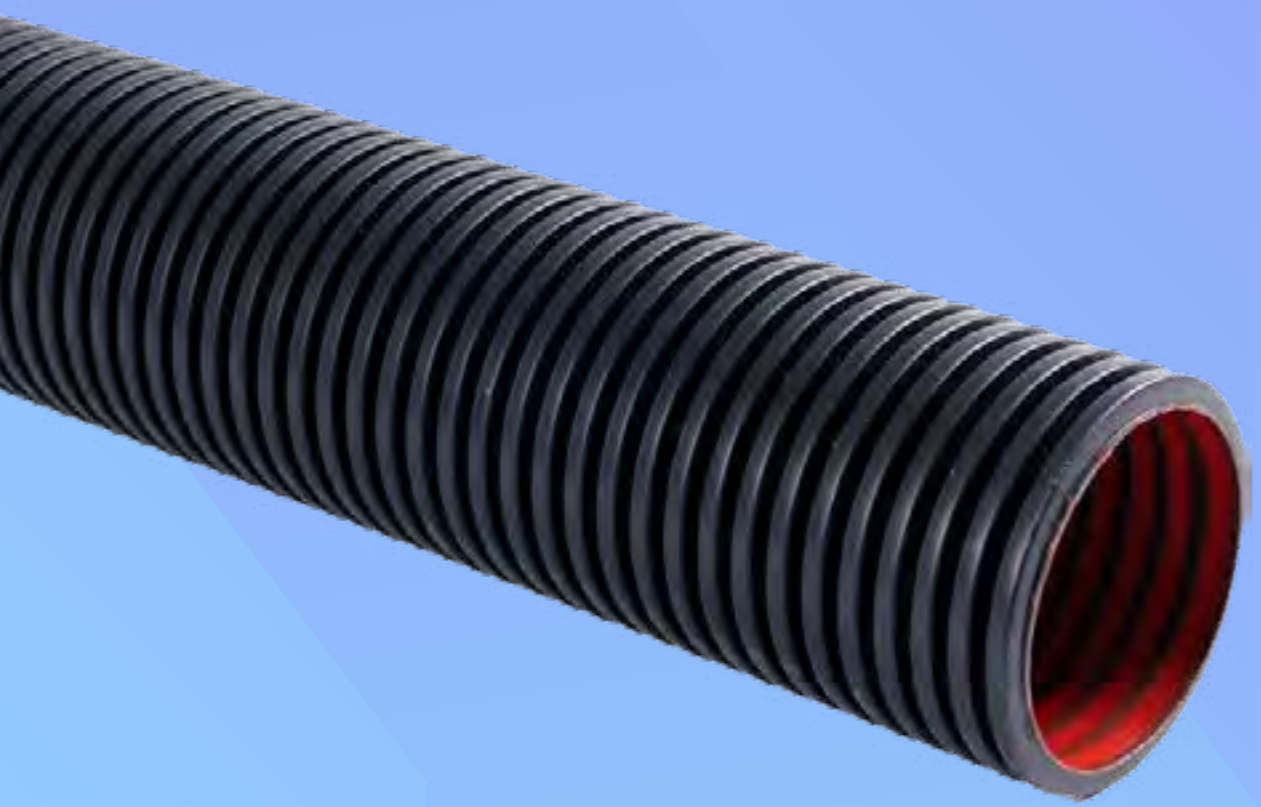
Colour		Application
Black/Red	● ●	Electricity/Power
Orange	●	Street Lighting & Traffic Signal
Purple	●	Motorway Communication/Street Lighting (Scotland)
Yellow	●	Gas
Blue	●	Water
Green	●	CCTV
Grey	●	Telecommunications

Up to 150mm manufactured in accordance to BSEN61386



MetroDuct

Class 1 & 2 Twin Wall Duct

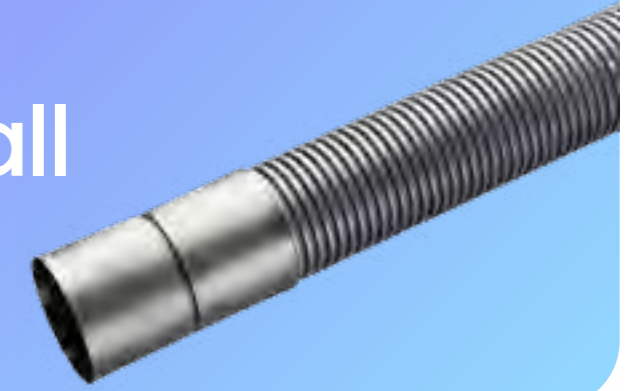


Class 1 Polypropylene Twin Wall



ID (mm)	OD (mm)	Weight (kg/m)	Cert.	Pack Qty	Code
100mm	120mm	1.2	ENATS 12/24	85	29526
125mm	145mm	1.395	ENATS 12/24	72	29626

Class 2 HDPE Twin Wall



ID (mm)	OD (mm)	Cert.	Length (m)	Pack Qty	Code
100mm	120mm	ENATS 12/24	6m	85	29516
100mm	120mm	ENATS 12/24	3m	72	29513
125mm	145mm	ENATS 12/24	6m	72	29616
150mm	178mm	ENATS 12/24	6m	33	29716
150mm	178mm	ENATS 12/24	3m	33	29713

Class 1 & 2 HDPE Twin Wall bends



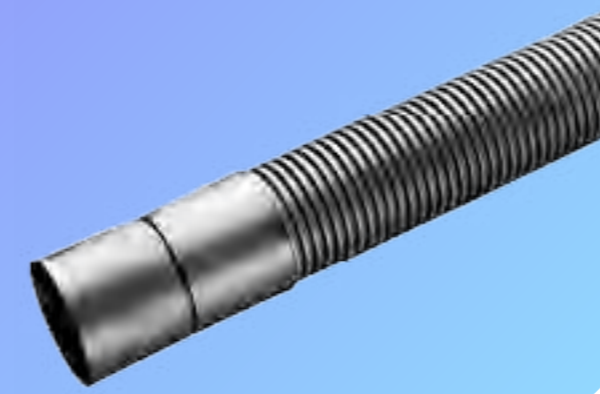
ID (mm)	OD (mm)	Angle	Length (m)	Code
100mm	120mm	11.25	1.2m	29800
100mm	120mm	11.25	3.9m	29802
100mm	120mm	22.5	1.2m	29803
100mm	120mm	22.5	3.9m	29805
100mm	120mm	45	1.2m	29807
125mm	145mm	11.25	3.9m	29812
125mm	145mm	22.5	3.9m	29815
125mm	145mm	45	1.2m	29817
150mm	178mm	11.25	1.2m	29820
150mm	178mm	11.25	3.9m	29822
150mm	178mm	22.5	1.2m	29823
150mm	178mm	22.5	3.9m	29825
150mm	178mm	45	1.2m	29827

MetroDuct

Class 3 HDPE Utility Duct



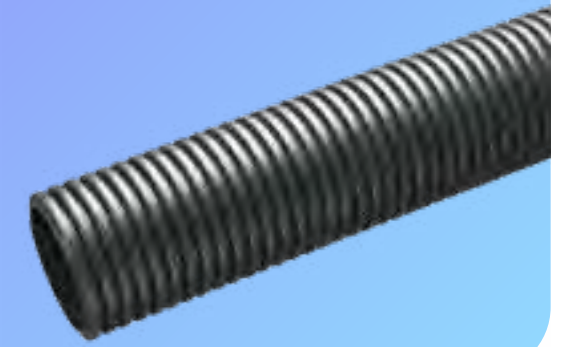
Class 3 HDPE Twin Wall



Electric Black

ID/OD (mm)	Length (m)	Pack Qty	Code	Cert.
Printed - Electric Cable Duct				
94/110	6	100	29120	BBA
100/120	6	85	29278	BBA
125/145	6	72	29111	BBA
137/160	6	33	29119	BBA
150/178	6	33	29112	BBA

Class 3 HDPE Twin Wall Sealed System

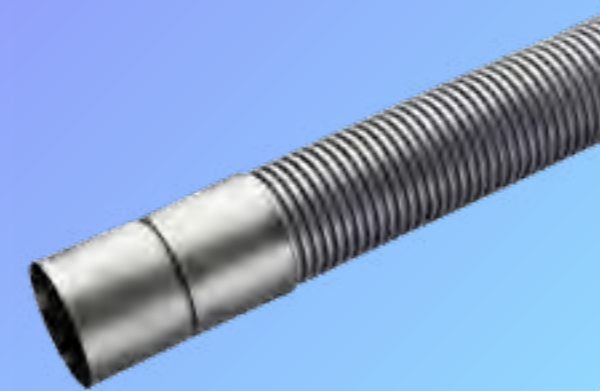


Electric Black Plain Ended

ID/OD (mm)	Length (m)	Pack Qty	Code
94/110+	6	100	29007
100/120+	6	85	29388
150/178+	6	33	29370

For sealed system 2 sealing rings required per 6m length.
*Subject to minimum order quantity and lead time.

Class 3 HDPE Twin Wall



Unmarked Black

ID/OD (mm)	Length (m)	Pack Qty	Code	Cert.
94/110*	6	100	29450	BBA
100/120*	6	85	29451	BBA
125/145*	6	72	29452	BBA
137/160*	6	33	29453	BBA
150/178*	6	33	29454	BBA

*Subject to minimum order quantity and lead time.

Class 3 HDPE Twin Wall Coiled

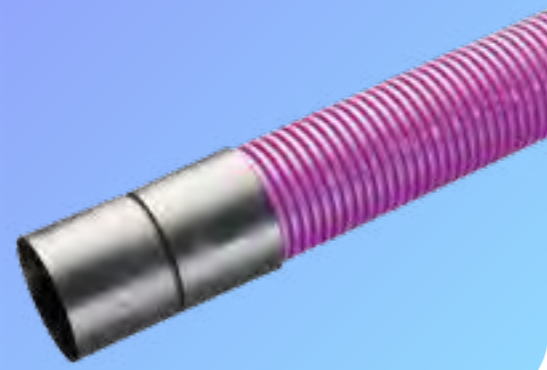


Electric Black

ID/OD (mm)	Length (m)	Colours	Pack Qty	Code	Cert.
Printed Electric Cable Duct					
50/63	50	Black	8	29113	BS
94/110	50	Black	5	29267	BS
137/160	25	Black	7	29268	BS
137/160	50	Black	4	29092	BS

Coils supplied with pre-installed draw string and coupling.

Class 3 HDPE Twin Wall Sealed System

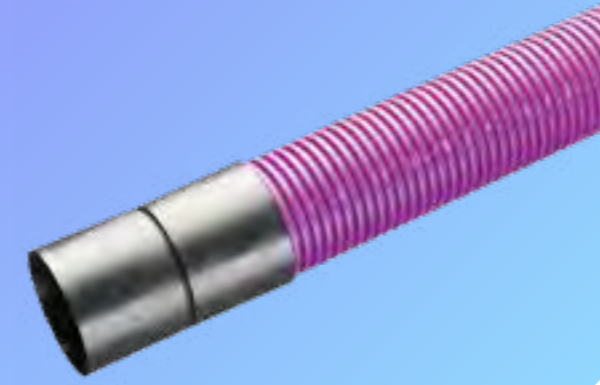


Motorway Communication

ID/OD (mm)	Length (m)	Pack Qty	Code	Cert.
94/110	6	100	29046	BBA
100/120	6	85	29364	BBA
150/178	6	33	29420	BBA

For sealed system 2 sealing rings required per 6m length.
*Subject to minimum order quantity and lead time.

Class 3 HDPE Twin Wall

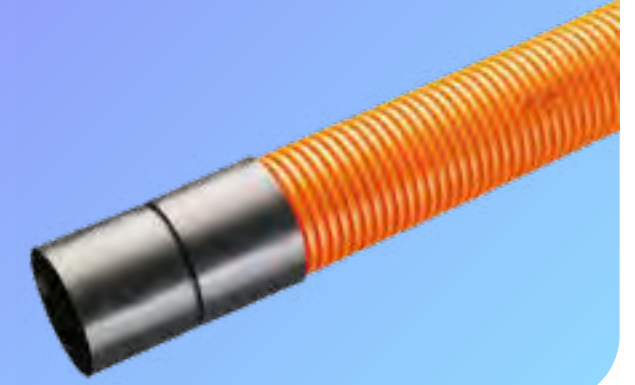


Motorway Communication

ID/OD (mm)	Length (m)	Pack Qty	Code	Cert
94/110	6	100	29043	BBA
100/120	6	85	29200	BBA
137/160	6	33	29249	BBA
150/178	6	33	29059	BBA

Supplied with one coupling per length.

Class 3 HDPE Twin Wall



Street Lighting/Traffic Signal

ID/OD (mm)	Length (m)	Marked	Pack Qty	Code	Cert
50/63*	6	SL	158	29087	BBA
50/63*	6	TS	158	29086	BBA
94/110	6	SL	100	29085	BBA
94/110	6	TS	100	29084	BBA
94/110	6	Plain	100	29042	BBA
100/120*	6	SL	85	29083	BBA
100/120*	6	TS	85	29082	BBA
100/120*	6	Plain	85	29052	BBA
137/160*	6	SL	33	29198	BBA
137/160*	6	TS	33	29189	BBA
137/160*	6	Plain	33	29197	BBA
150/178	6	SL	33	29061	BBA
150/178	6	TS	33	29356	BBA
150/178*	6	Plain	33	29357	BBA

Class 3 HDPE Twin Wall Coiled



Motorway Communication

ID/OD (mm)	Length (m)	Pack Qty	Code	Cert
50/63	50	8	29279	BS
94/110	50	5	29280	BS
137/160*	50	4	29019	BS

Class 3 HDPE Twin Wall Coiled

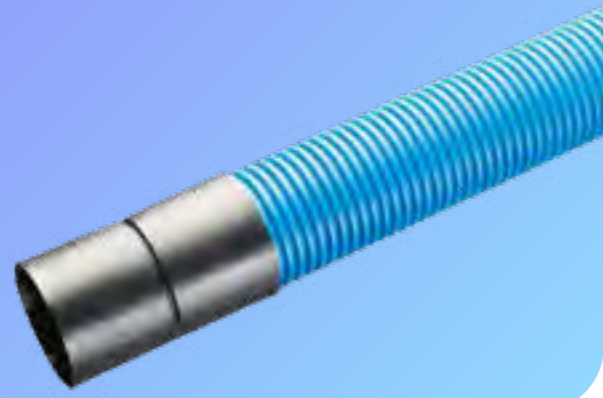


Street Lighting/Traffic Signal

ID/OD (mm)	Length (m)	Marked	Pack Qty	Code	Cert.
50/63	50	SL	8	29091	BS
50/63	50	TS	8	29090	BS
50/63	50	Plain	8	29037	-
94/110	50	SL	5	29089	BS
94/110	50	TS	5	29088	BS
94/110	50	Plain	5	29047	-
137/160*	50	SL	4	29135	BS
137/160*	50	TS	4	29348	BS
137/160*	50	Plain	4	29124	-

*Subject to minimum order quantity and lead time.

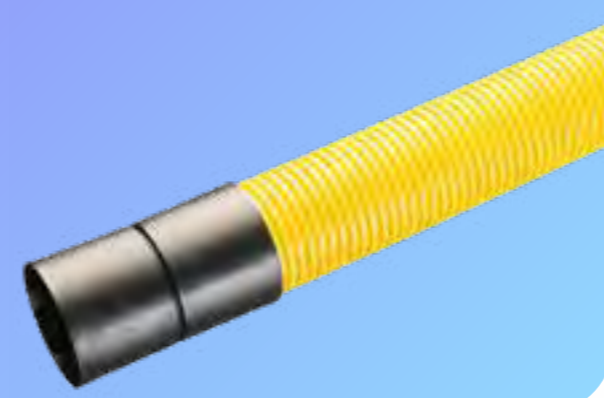
Class 3 HDPE Twin Wall



Utility – Water

ID/OD (mm)	Length (m)	Pack Qty	Code	Cert.
Blue				
94/110	6	100	29110	BBA
100/120*	6	85	29350	BBA
137/160	6	33	29241	BBA
150/178	6	33	29355	BBA
225/266+	6	14	29413	-
300/353+	6	9	29414	-
450/518	6	4	29434	-
Blue Perforated				
150/178	6	33	29432	-
225/266	6	14	29428	-
300/353	6	9	29433	-
450/518	6	4	29435	-

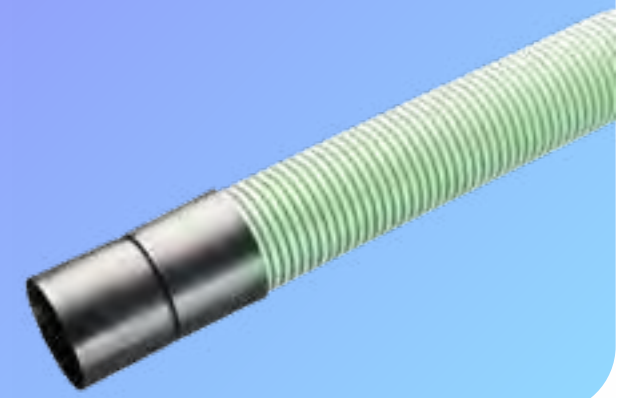
Class 3 HDPE Twin Wall



Utility – Gas

ID/OD (mm)	Length (m)	Pack Qty	Code	Cert.
Yellow				
94/110	6	100	29045	BBA
100/120*	6	85	29349	BBA
137/160	6	33	29244	BBA
150/178	6	33	29358	BBA
225/266+	6	14	29411	-
300/353+	6	9	29412	-
450/518	6	4	29437	-
Yellow Perforated				
150/178	6	33	29431	-
225/266	6	14	29424	-
300/353	6	9	29427	-
450/518	6	4	29436	-

Class 3 HDPE Twin Wall



Utility – CCTV

ID/OD (mm)	Length (m)	Pack Qty	Code	Cert.
Green				
94/110	6	100	29281	BBA
100/120*	6	85	29351	BBA
137/160*	6	33	29250	BBA
150/178	6	33	29359	BBA

Class 3 HDPE Twin Wall Coiled



ID/OD (mm)	Length (m)	Pack Qty	Code	Cert.
50/63	50	8	29039	BS
94/110	50	5	29049	BS

Class 3 HDPE Twin Wall Coiled



ID/OD (mm)	Length (m)	Pack Qty	Code	Cert.
50/63	50	8	29040	BS
94/110	50	5	29050	BS

Class 3 HDPE Twin Wall Coiled



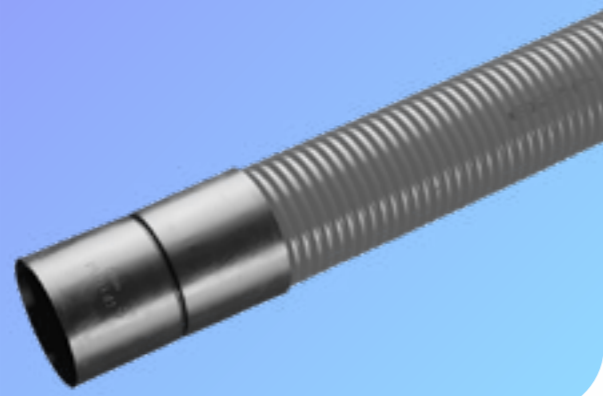
ID/OD (mm)	Length (m)	Pack Qty	Code	Cert.
50/63	50	8	29094	BS
94/110	50	5	29171	BS

Coils supplied with pre-installed draw string and coupling. Other colours available subject to a minimum order quantity and lead time.

* Subject to minimum order quantity and lead time.

+ Please Note: Pipe supplied plain ended – order couplings separately.

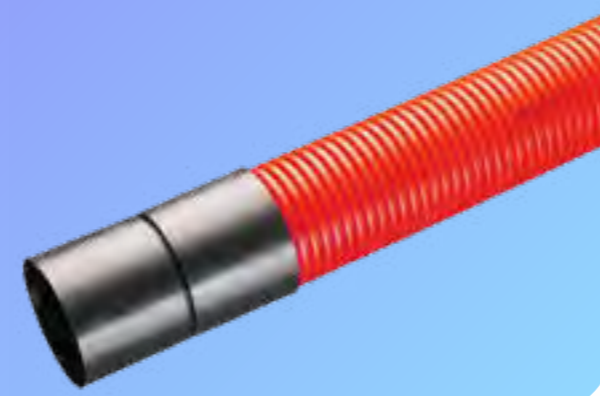
Class 3 HDPE Twin Wall



Made to order
Utility – Telecommunications

ID/OD (mm)	Length (m)	Pack Qty	Code	Cert.
Grey				
94/110*	6	100	29238	BBA
150/178*	6	33	29396	BBA

Class 3 HDPE Twin Wall



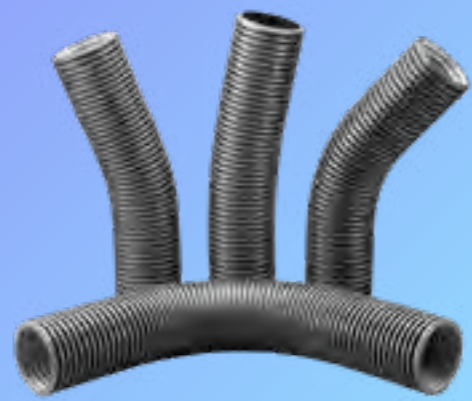
Made to order
Utility – Electricity/Power

ID/OD (mm)	Length (m)	Pack Qty	Code	Cert.
Red				
94/110	6	100	29170	BBA

* Subject to minimum order quantity and lead time.

MetroDuct Fittings

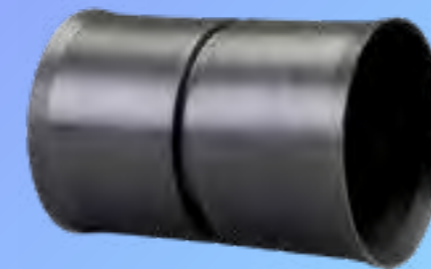
HDPE Twin Wall Bends



ID/OD (mm)	11 1/4° Code	22 1/2° code	45° Code	90° Code
Supplied plain ended.				
94/110	29144	29141	29138	29149
100/120	29215	29174	29164	29159
125/145	29243	29165	29166	29156
137/160	29022	29180	29181	29182
150/178	29262	29183	29163	29162

Order couplings separately.

Couplings



ID (mm)	Code	Weight	Bag Qty
63	29104	0.04kg	1
90	29103	0.10kg	1
110	29225	0.17kg	1
120	29101	0.18kg	1
145	29100	0.27kg	1
160	29099	0.23kg	1
178	29098	0.26kg	1
266	29415	-	1
353	29416	-	1

Sealing Rings

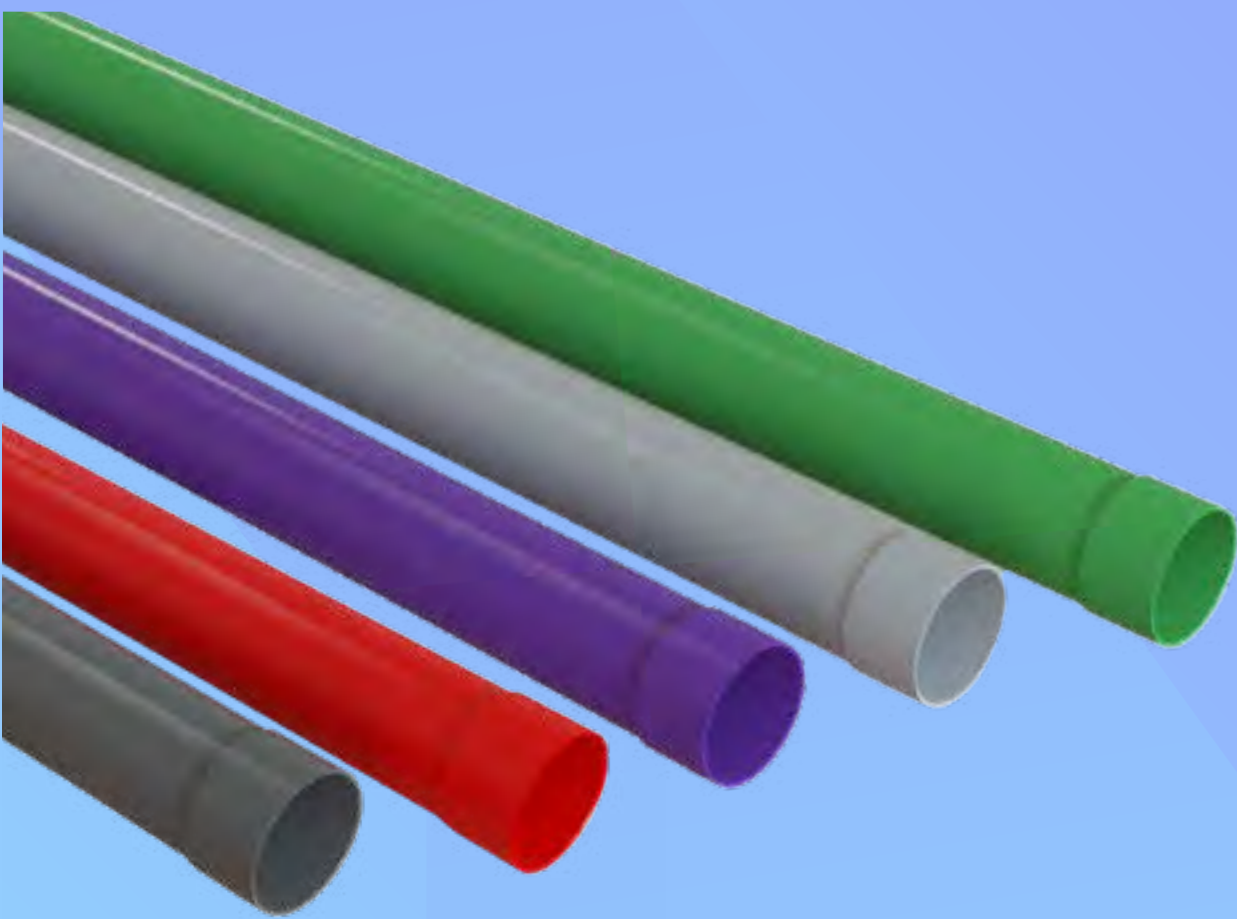


Diameter (mm)	Code
110	29107
120	29115
160	29106
178	29117

For sealed system 2 sealing rings required per 6m length.

PVC Duct

Class 1 & 2 uPVC Duct



Class 1 uPVC

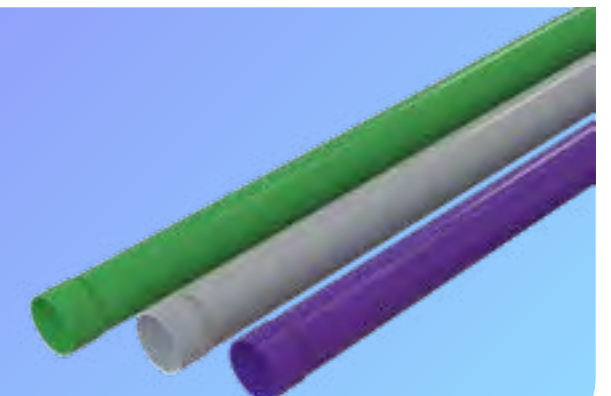


Fully compliant with ENATS
12/24 Certificate No. A3002

OD (mm)	Length (m)	Code		Pack Qty
		Black RAL 7021	Red RAL 3020	
88.9mm	3	30131	30130	138
88.9mm	6	30133	30132	138
110mm	3	30111	30110	90
110mm	6	30112	30113	90
160mm	3	30161	30160	39
160mm	6	30163	30162	39

Supplied with blown socket

Class 2 uPVC



Fully compliant with ENATS
12/24 Certificate No. T5952

OD (mm)	Length (m)	Code		Pack Qty
		Black RAL 7021	Red RAL 3020	
38mm	3	30071	30070	780
96.5mm	6	30098	30099	115
96.5mm	3	30091	30090	115
110mm	6	30083	30081	90
110mm	3	30082	30080	90
160mm	6	30266	30265	39
160mm	3	30261	30260	39

Supplied with blown socket

Class 1 uPVC bends



Code

OD(mm)	Angle	Radius (m)	Code		Pack Qty
			Black	Red	
110mm	11.25	1.2m	-	36101	30
110mm	11.25	3.5m	36103	-	10
110mm	22.5	1.2m	-	36102	30
110mm	22.5	1.75m	36104	-	10
110mm	45	1.2m	-	36105	25
110mm	90	1.2m	-	36106	25
160mm	11.25	1.2m	-	36161	30
160mm	11.25	3.9m	36165	-	39
160mm	22.5	1.2m	-	36162	30
160mm	22.5	3.9m	36166	-	39
160mm	45	0.56m	36167	-	5
160mm	45	1.2m	-	36163	30
160mm	90	1.2m	36168	36164	25

Class 2 uPVC bends



Code

OD(mm)	Angle	Radius (m)	Code		Pack Qty
			Black	Red	
38mm	11.25	0.4m	36505	36301	50
38mm	22.5	0.4m	36506	36302	50
38mm	45	0.4m	36507	36303	50
38mm	90	0.4m	36508	36304	50
96.5mm	11.25	3.8m	36605	36601	10
96.5mm	22.5	2.585m	36606	36602	10
96.5mm	45	0.35m	36607	36603	15
96.5mm	90	0.427m	36608	36604	10
110mm	11.25	1.2m	36114	36110	10
110mm	22.5	1.2m	36115	36111	50
110mm	45	1.2m	36116	36112	50
110mm	90	1.2m	36117	36113	50
160mm	11.25	1.2m	36175	36171	30
160mm	22.5	1.2m	36176	36172	30
160mm	45	1.2m	36177	36173	30
160mm	90	1.2m	36178	36174	25

Smooth Duct



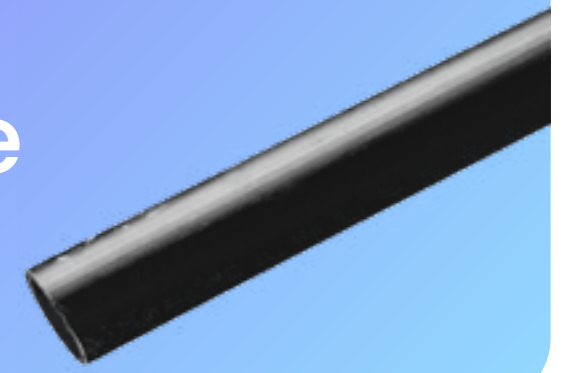
Smooth Duct



ID/OD (mm)	Length (m)	Weight (kg/m)	Pack Qty	Code
53/63*	6	5	288	38028
97/107	6	5	76	38091
53/63*	6	5	288	38059
97/107	6	5	76	38030

Supplied with a coupler. Extra couplings to be ordered separately.
*Subject to minimum order quantity and lead time.

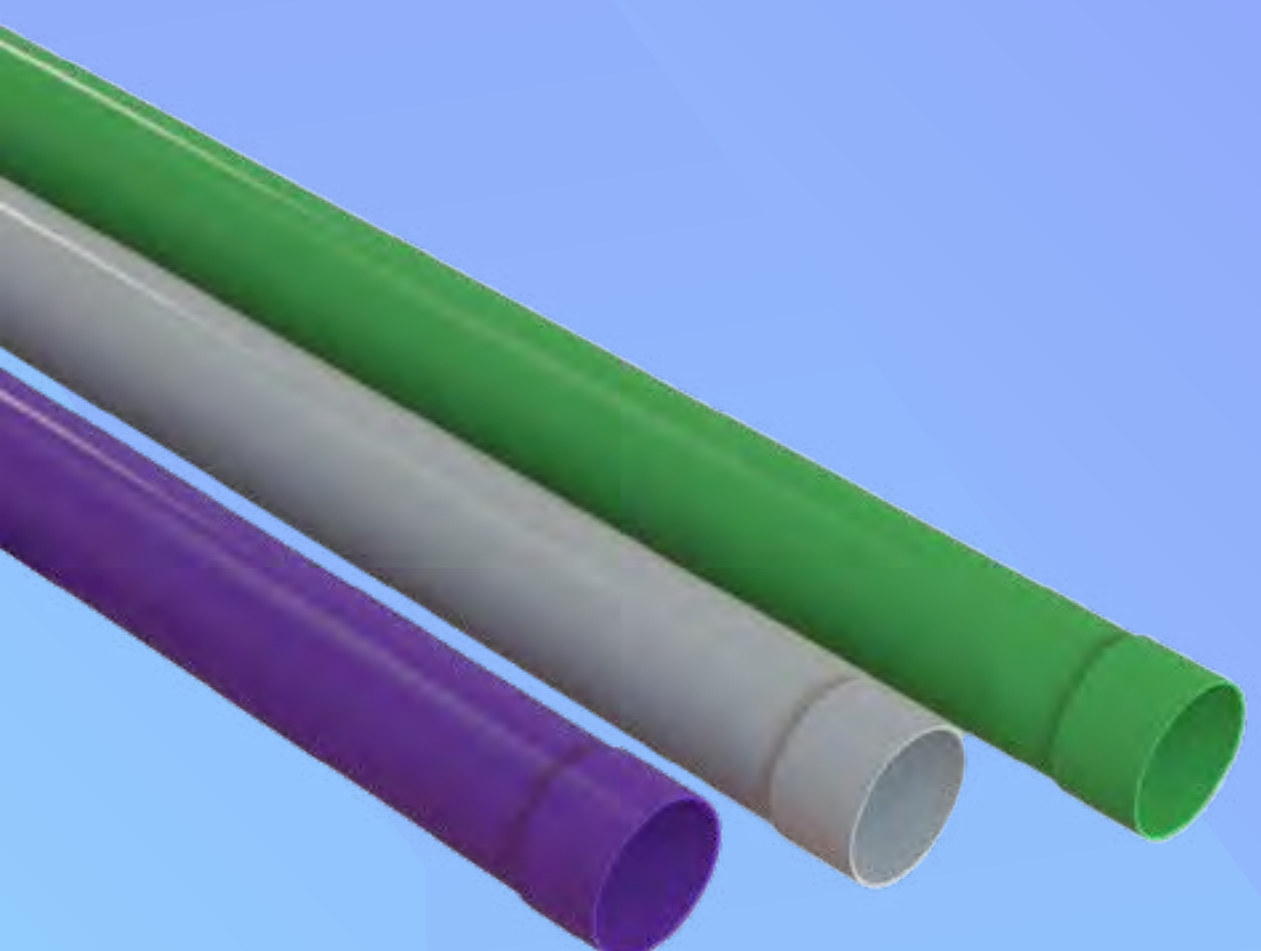
Smooth Duct – Electric Cable



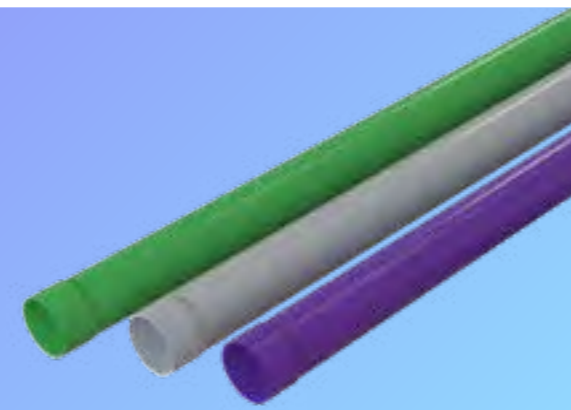
ID/OD (mm)	Length (m)	Weight (kg/m)	Pack Qty	Code
32/37	25	2.5	15	38020
32/37	50	2.5	8	38023
32/37	100	2.5	5	38024
38/44	25	3	15	38021
38/44	50	3	8	38025
38/44	100	3	5	38026
50/60	25	5	12	38033
50/60	50	5	8	38034

PE Smooth internal and external. Colour Black.
Coils supplied plain ended and couplers can be made to special order and a minimum order quantity applies.

uPVC Telecoms Duct



uPVC Telecoms Duct



OD (mm)	Length (m)	Pack Qty	Grey Code (RAL 7046)	Green Code (RAL 6024)	Purple Code (RAL 4001)
54mm	3m	369	30202	30203	30204
96.5mm	6m	115	30095	30096	30097
96.5mm	3m	115	30092	30093	30094
110mm	6m	90	30085	30087	30089
110mm	3m	90	30084	30086	30088
160mm	6m	39	30267	30268	30269
160mm	3m	39	30262	30263	30264

uPVC Telecoms Duct bends

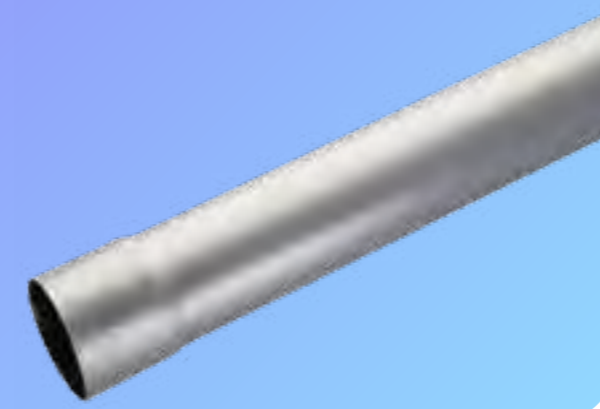


OD (mm)	Angle	Radius (m)	Pack Qty	Grey Code	Green Code	Purple Code
54mm	11.25	0.35m	60	36401	36405	36409
54mm	22.5	0.35m	60	36402	36406	36410
54mm	45	0.35m	75	36403	36407	36411
54mm	90	0.35m	15	36404	36408	36412
96.5mm	11.25	0.7m	15	36609	36613	36617
96.5mm	22.5	0.7m	15	36610	36614	36618
96.5mm	45	0.35m	15	36611	36615	36619
96.5mm	90	0.427m	10	36612	36616	36620
110mm	11.25	1.2m	10	36118	36122	36126
110mm	22.5	1.2m	50	36119	36123	36127
110mm	45	1.2m	50	36120	36124	36128
110mm	90	1.2m	50	36121	36125	36129
160mm	11.25	1.2m	30	36179	36183	36187
160mm	22.5	1.2m	30	36180	36184	36188
160mm	45	1.2m	30	36181	36185	36189
160mm	90	1.2m	25	36182	36186	36190

General Purpose Duct



General Purpose Duct



OD (mm)	Length (m)	Pack Qty	Code
54	6	369	30052
88.9	6	125	30053
114	6	76	30054
168	6	39	30055
200	6	25	30056

General Purpose Duct Bends



OD(mm)	Pack Qty	11 ¼° Code	22 ½° code	45° Code	90° Code
54	50	36054	36058	36071	36073
88.9	15	36053	36057	36078	36074
114	10	36052	36056	36079	36075
168	2	36051	36055	36080	36076
200	1	-	-	36081	36077

General Purpose Duct Connectors



Diameter (in)	Pack Qty	Code
2	100	36050
3	50	36049
4	50	36048
6	25	36047
8	1	36046

Supplied into stock in bag quantities only.

HDPE Single Wall Ducting



HDPE Single Wall Ducting



OD (mm)	Length (m)	Colour	Code	Cert.
Street Lighting Scotland - Purple				
35	25	Purple	M68027	BS
63	100	Purple	M68006	BS
105	40	Purple	M68001	BS

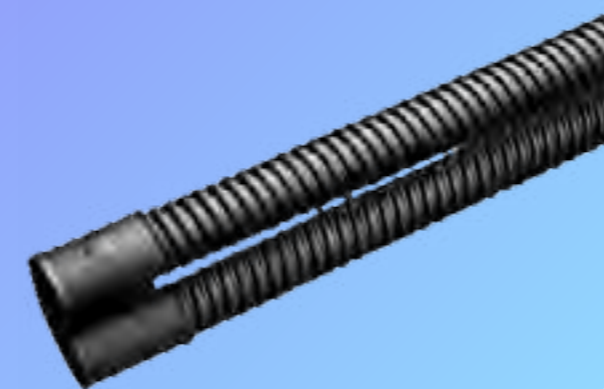
HDPE Single Wall Ducting



Yellow Perforated Gas pipe - Kitemarked to BS4962

OD (mm)	Length (m)	Pack Qty	Code	Cert.
Yellow Perforated				
60	50	8	68075	BS
60	150	5	68074	BS
80	25	9	68073	BS
80	50	7	68072	BS
80	100	4	68071	BS
100	25	7	68070	BS
100	50	6	68069	BS
100	100	4	68068	BS
160	50	4	68066	BS

Twin Wall Split Duct



C/W Dowels or ties as appropriate

ID/OD (mm)	Length (m)	Pack Qty	Code
94/110	1	100	29285
100/120	1	85	29080
125/145	1	72	29210
150/178	1	33	29121
94/110	3	100	29070
100/120	3	85	29081
125/145	3	72	29242
150/178	3	33	29223

Made to order, subject to a lead time.

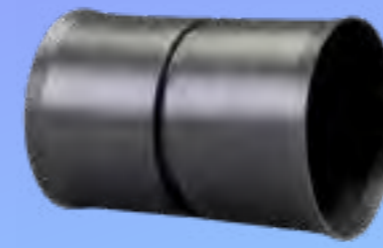
Duct Accessories

Reducers – Scotland



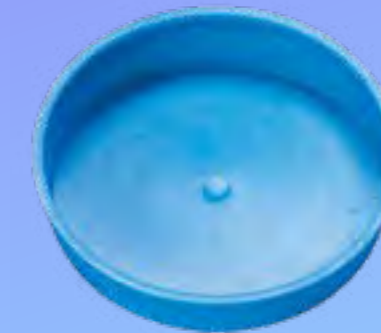
OD (mm)	Colour	Code
105x63	Black	68008

Connectors – Scotland



OD (mm)	Colour	Code
63	Black	M29343
105	Black	M29345

End Caps



Diameter (mm)	Code
63	29131
90*	29130
110	29129
120	29128
145	29127
160	29126
178	29168

*Subject to minimum order quantity and lead time

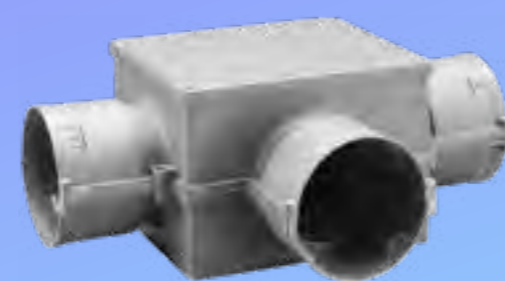
Draw Cord



Size (Kg)	Code
220 Metre Coil	29264
500 Metre Drum	29191

Nominal 5kN Breaking Strength. 6mm cord.

Junction Box – Scotland



OD (mm)	Colour	Code
105	Black	M68132

Duct Spacer



Description	Size	Code
4 Way	110	29230
4 Way	120	29375
4 Way	150 (178)	29399
6 Way	110	29228
6 Way	150 (178)	29231
8 Way	150 (178)	29235

Marker Tape



Service	Colour	Code
Electric Cable	Yellow	34036
Water Main	Blue	34037
Gas Main	Yellow	34038
Telephone Cable	Green	34039
Foul Sewer	Red	34040
Street Lighting	Yellow	34041

365m Rolls.

Lubricant



Size (Kg)	Code
1.0	50001
2.5	50002

Suitable for all types of push fit gravity pipe systems. We cannot guarantee the performance of the product if Naylor Lubricant is not used.



Access Chamber



Clear opening Width (mm)	Clear opening Length (mm)	Depth (mm)	Pallet Qty	Code
300	300	330	18	69224
300	450	330	18	69225
450	450	330	24	69226
450	600	330	18	69227
600	600	330	13	69228

Supplied fully assembled or flat packed.

The Naylor Modular Access Chambers systems are an easy to assemble, eco-friendly system, which can either be supplied flat packed or pre-assembled depending on the customer's preference

Features

- Panels quick and easy to assemble
- Interlock design at each corner
- Panels available from 300, 450 & 600mm
- Panels are 330mm deep, with locking features
- Panels are pre-sized to take pipe from 63mm to 160mm
- Wide flange design, enables covers to fit onto top chamber ring

Benefits

- Manufactured from recycled Polypropylene
- External wall patterned, such that concrete surround will flow into voids
- Composite covers & frames available
- Adaptors available to suit 178mm pipe

Covers & Frames



Dimensions (mm)	Code
300x300	69128
300x450	69129
450x450	69127
450x600	69126
600x600	69125

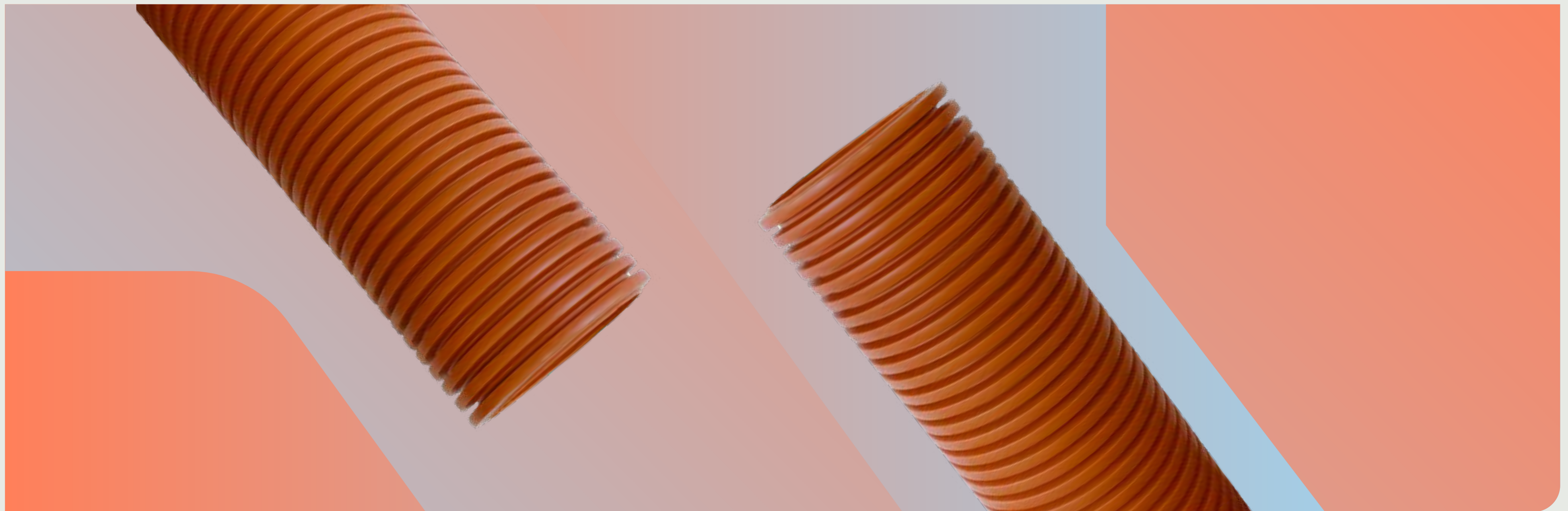
Features and Benefits

- Composite covers available with an integral anti-skid pattern on the surface, load rated to BS EN124 Class B125
- Composite Covers are black in colour and marked 'Naylor Drainage' with the legend 'Traffic Signals' or 'Street Lighting' where applicable
- Composite Covers have integral lifting keyholes and locking features available as standard. A wide external frame flange enables easy fit onto Naylor Access Chambers
- A deep seated galvanised frame ensures flush fit to Naylor Access Chambers. Covers available in all sizes to fit Naylor Metro Access Chambers

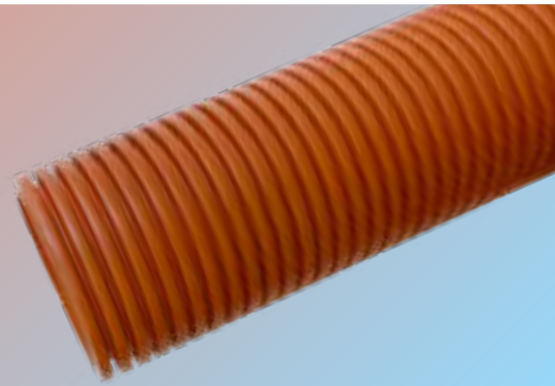
sewer

Naylor's new MetroSewer range has been designed to ensure complete peace of mind in sewer applications that need to meet the rigorous testing requirements of the water industry.

Made from durable, high quality twin wall polypropylene, MetroSewer products are designed for adoptable sewer applications and meet the requirements of both EN 13476-3 (piping systems for non-pressure underground drainage and sewerage) and WIS 4-35-01 (specification for thermoplastics structured wall pipes – supplementary test requirements).



Twin Wall Plain Ended Pipe



ID (mm)	Length (m)	Material	Pack Qty	Code
150mm	3	PP	33	73101
150mm	6	PP	33	73104
225mm	3	PP	14	73102
225mm	6	PP	14	73105
300mm	3	PP	9	73103
300mm	6	PP	9	73106

Couplings



ID (mm)	Length (mm)	Material	Pack Qty	Code
150mm	176mm	HDPE	10	73121
225mm	284mm	HDPE	1	73122
300mm	353mm	HDPE	1	73123

Junctions



ID (mm)	Product Range	Angle	Material	Code
150mm	Equal Junction	45	PP	73401
150mm	Equal Junction	90	PP	73402
225mm	Equal Junction	45	PP	73405
225mm	Unequal Junction	45	PP	73403
300mm	Equal Junction	45	PP	73411
300mm	Unequal Junction	45	PP	73407
300mm	Unequal Junction	45	PP	73409

Bends



ID (mm)	Product Range	Angle	Material	Code
150mm	Double-Socket	15	PP	73115
150mm	Double-Socket	30	PP	73130
150mm	Double-Socket	45	PP	73145
150mm	Double-Socket	90	PP	73190
225mm	Double-Socket	15	PP	73125
225mm	Double-Socket	30	PP	73230
225mm	Double-Socket	45	PP	73245
225mm	Double-Socket	90	PP	73290
300mm	Double-Socket	15	PP	73315
300mm	Double-Socket	30	PP	73330
300mm	Double-Socket	45	PP	73345
300mm	Double-Socket	90	PP	73390

Invert Level Reducers



ID (mm)	OD (MM)	Product Range	Material	Pack Qty	Code
150mm	110mm	Spigot	PP	10	73501
150mm	160mm	Spigot	PP	10	73502
225mm	150mm	Double-Socketed	PP	1	73503
300mm	225mm	Double-Socketed	PP	1	73504

Socket Plug

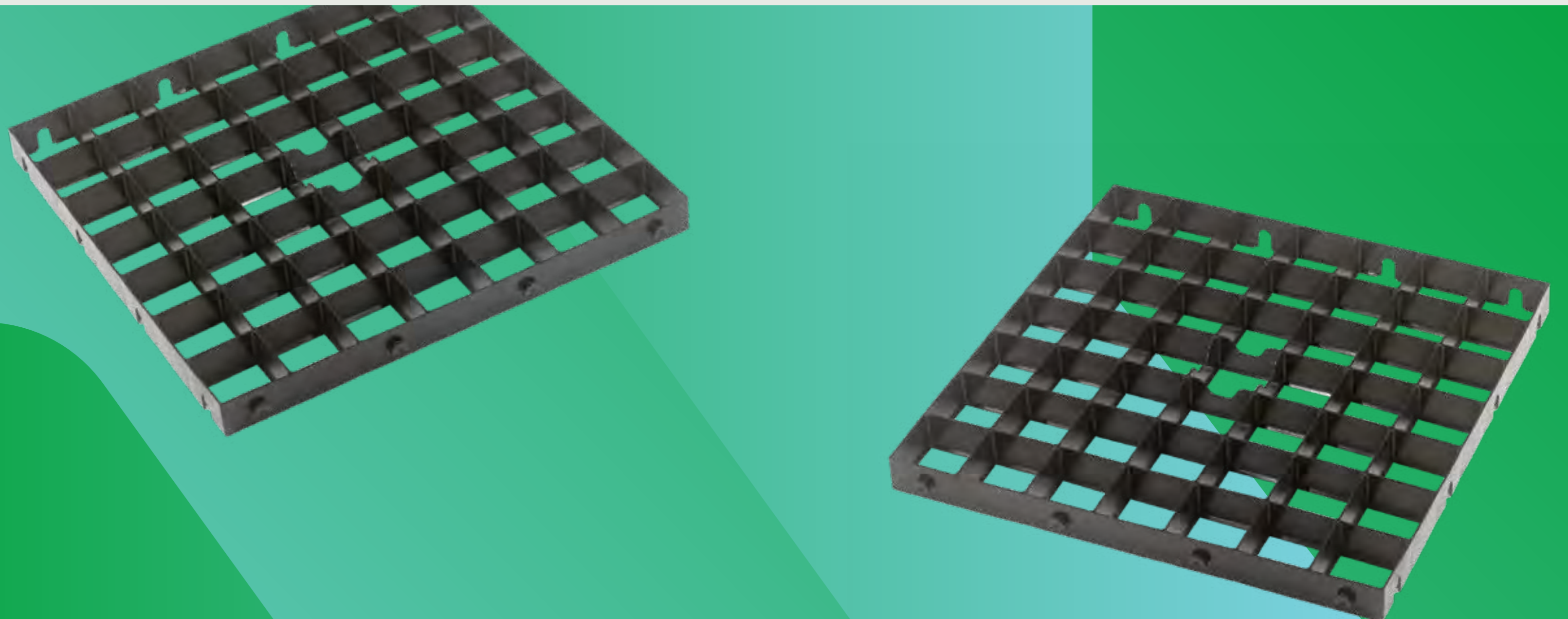


ID (mm)	Material	Pack Qty	Code
150mm	HDPE	10	73601
225mm	HDPE	1	73602

storm

We designed our environmental and sustainable urban drainage solutions (SuDS) to mimic the way that water drains in the natural world, so that water run-off can more effectively be managed in different commercial and domestic spaces.

Our storm systems comprise: AquaVoid, a surface water attenuation and infiltration crate; EnviroFlow, a drainage and filtration unit; SmartSponge, a hydrocarbon removal system, and GroundGrid, a cellular paving system.



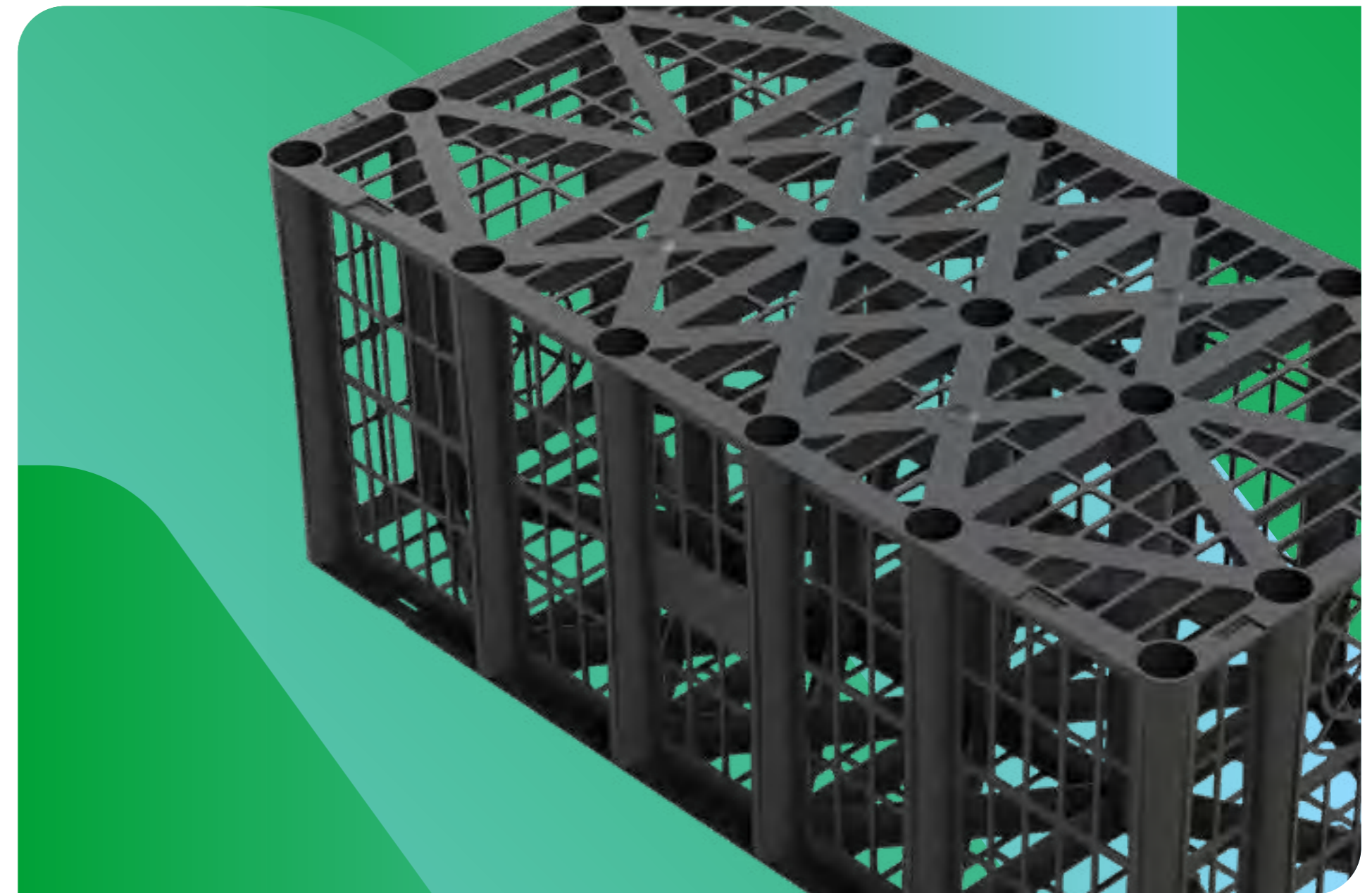
AquaVoid

Manufactured from recycled polypropylene, AquaVoid is efficient at dealing with stormwater at or near its source. We can also make it without a geomembrane, so the system can be used as a soakaway.

The AquaVoid system is made with an interlocking modular cell design which sits on a purpose-designed baseplate. This can be stacked to create different void sizes. A geotextile removes debris from stormwater while a geomembrane enables water storage, when required.

With a 400kN/m² vertical loading, Aquavoid Metro can be used below service areas, car parks and landscaped areas.

Nominal crate size	1.2m (L) x 0.6m (W) x 0.3m (H)
Nominal base size	1.2m (L) x 0.6m (W) x 0.02m (H)
Coverage Rate	4.63 crates / m ³
Volume of crates	0.216 m ³
Capacity of crates	0.2063 m ³ (void ratio 95.5%)
Weight	10.5 kg
Short Term Compressive Strength	400 kN/m ² Vertical 83 kN/m ² Lateral
Maximum Cover	2.5m
Minimum Cover	0.5m landscape, 0.6m Cars, 0.8m HGV



EnviroFlow

The Naylor EnviroFlow provides a unique solution for land drainage, ground stabilisation, green infrastructure and filtration solutions that are proven to be technically superior to traditional systems.

Made from 100% recycled thermo-plastics, EnviroFlow's products are permanent solutions that do not clog, are easy to install and handle and are high strength and long lasting.

EnviroFlow is a filtration and ground stabilisation solution designed for land drainage. It uses advanced capillary action to redirect stormwater in any direction without clogging.

Provided in planks measuring 1m x 220mm x 45mm thickness, the system can be used independently as permeable block 'paving' or as part of a green roof drainage system. It can also be used on embankments for ground stabilisation.

EnviroFlow is easy install, requires minimal maintenance, and benefits from high strength and durability.



SmartSponge

SmartSponge is an innovative way of addressing hydrocarbon pollution. It removes and holds polluting hydrocarbons and oil derivatives that live within surface water run-off. Turning water contaminants into a solid waste and minimising disposal costs, it can be provided as a block for drainage gullies or in mesh bags.

The Naylor SmartSponge is a unique hydrocarbon (oils) removal system designed to remove the oil and permanently bond it into the molecular structure of the material so it cannot be removed under any circumstances.

The subsequent waste material can be recycled via a waste to energy facility.

- The SmartSponge is NOT a spill kit, Smart Sponge applications are able to remove up to 95% of all oil contaminants present in stormwater run-off. The SmartSponge technology remains buoyant in calm or agitated water, allowing it to remain in place until fully saturated and resulting in no wasted product.

Applications include:

- Highways
- Car parks and truck stops
- Airport tarmac drains
- Commercial fuel distributor facilities
- Commercial and/or residential developments

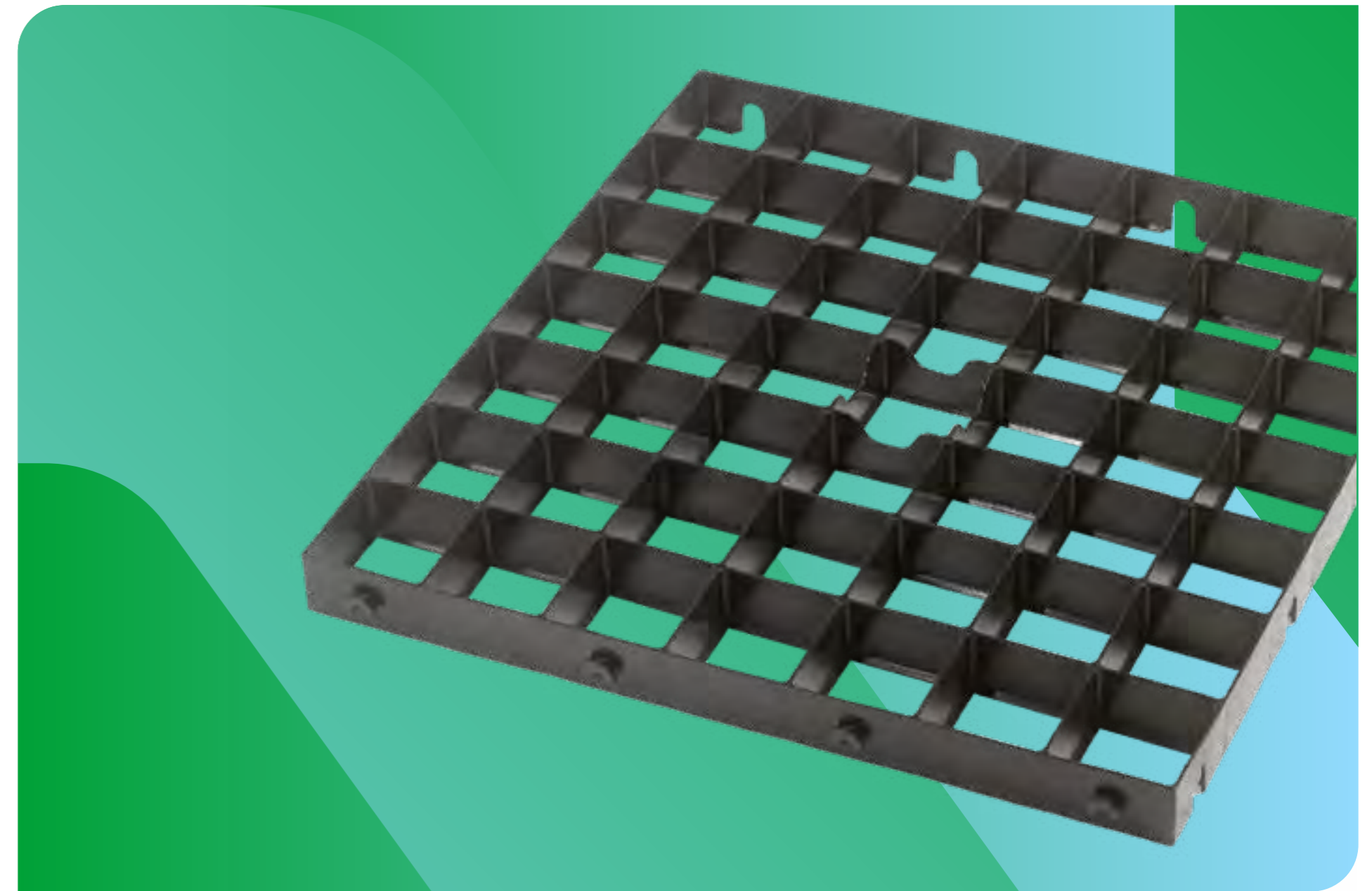


GroundGrid & GroundGrid Plus

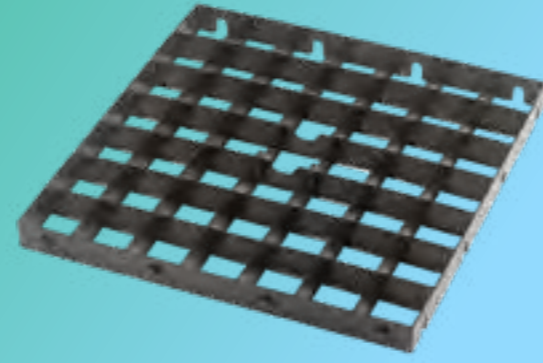
GroundGrid is a modular cellular paving system made from 100% recycled plastic. It can be used to create an exceptionally durable, permanently porous, high load bearing structure when filled with either grass or gravel.

Our GroundGrid range comprises GroundGrid for domestic applications and axle weights of upto 30 tonnes, and GroundGrid Plus which is used in heavier duty applications such as commercial car parks and HGV loadings and access areas, and which can withstand axle loads of upto 60 tonnes.

When filled with decorative gravel, the structural 'cells' in the pavers create an attractive and exceptionally hard-wearing surface and eliminate the problem of gravel 'migration'. The cells can also be filled with soil and seeded to create a natural grass surface with the strength to handle both pedestrian and vehicle traffic.



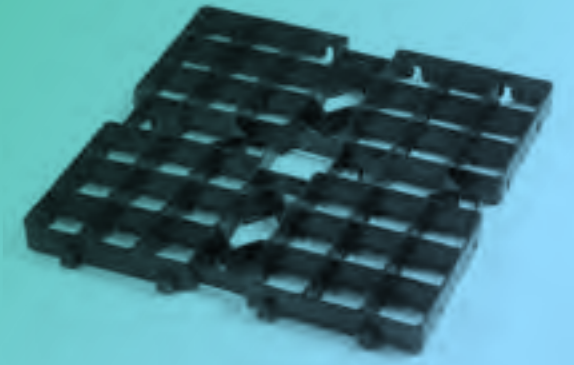
GroundGrid



Description

Naylor Product Code	65110
Unfilled Load Bearing Capacity (Tonnes/m ²)	150
Filled Load Bearing Capacity (Tonnes/m ²)	800
Nominal Installed Size (mm)	481x481x40
Nominal Cell Size (mm)	66x66
Grids/m ²	4.32
Infill Volume/m ²	0.034m ³
Weight (kg)	0.7 (2.98 kg/m ²)
Infiltration (mm/hr)	>5000
Colour	Black
Material	Recycled HDPE/PP
Chemical Resistance	Excellent
UV Resistance	High
End Life	Recyclable
Connection Type	Side lugs and slots
Demarcation Block Compatibility	✓
Country Of Manufacture	UK
Pallet Details	120/pallet (27.8m ²) 1 x 1 x 1.2m (110kg)
Full Load Details	48 pallets/load (1,340m ²)

GroundGrid Plus



Description

Naylor Product Code	65111PLUS
Unfilled Load Bearing Capacity (Tonnes/m ²)	320
Filled Load Bearing Capacity (Tonnes/m ²)	1000
Nominal Installed Size (mm)	500x500x40
Nominal Cell Size (mm)	68x68
Grids/m ²	4
Infill Volume/m ²	0.035m ³
Weight (kg)	1.2 (4.8 kg/m ²)
Infiltration (mm/hr)	>5000
Colour	Black
Material	Recycled HDPE/PP
Chemical Resistance	Excellent
UV Resistance	High
End Life	Recyclable
Connection Type	Side lugs and slots
Demarcation Block Compatibility	✓
Country Of Manufacture	UK
Pallet Details	120/pallet (30m ²) 1 x 1 x 1.2m (170kg)
Full Load Details	48 pallets/load (1440m ²)

Deliveries

Delivery Times

All standard deliveries are made between the hours of 8am and 4pm unless advised at the time of order.

Timed and out of hours deliveries are available for an extra charge.

Delivery Discrepancies

Claims for transit damage or shortage cannot be accepted unless advised within 72 hours of unloading by email to queries@naylor.co.uk

Claims reported after 72 hours will not be accepted.

Vehicle Waiting Time

It is a condition of every delivery that when the vehicle reaches its destination, the customer shall unload promptly.

In the event of delays, a waiting time charge will apply as per our standard terms and conditions.

If a vehicle is waiting in excess of 1 hour for the customer to commence unloading, the following charges will be added to the invoice.

Please see our website for a copy of our Terms & Conditions



Contact



England

help@naylor.co.uk
0330 0563355

Clough Green, Cawthorne,
Barnsley, South Yorkshire,
S75 4AD England

www.naylor.co.uk

Scotland

scotland@naylor.co.uk
01592 717900

Off Sea Road, Methil,
Leven, Fife,
KY8 3DE Scotland

www.naylor.co.uk



made in the UK



naylor.co.uk